



21st BIENNIAL REPORT

FY 2019 & 2020

of the St. Louis County Board of Elections

Photo Credit: Robert Cohen/St. Louis Post-Dispatch / Polaris

Table of Contents

2019

2020

Letter from the Directors.....	2	March Presidential Preference Election Recap....	12-14
New Voting Equipment.....	3	June General Municipal Election Recap.....	15
April General Municipal Election Recap.....	4-6	Voting During a Pandemic.....	16-19
June Runoff Election Recap.....	7	August Primary Election Recap.....	20-24
August Special Election Recap.....	8	Line Tracker App.....	25
November Special Election Recap.....	9-11	November General Election Recap.....	26-32
		Absentee Voting.....	33-34
		Outstanding Achievement Award.....	35
		County District Maps.....	36-46
		Central Committee Directory.....	47-48
		Staff Directory.....	49
		Recognition.....	50

Letter from the Directors

The concluding lines of the letter from the Directors in the 2018 biennial report made mention of the possibility of implementing new voting equipment in 2019 and 2020. As we trudged through the process of procuring new voting equipment in 2019, we were sure the new system would be the biggest news for St. Louis County voters in 2020. Of course the COVID-19 pandemic and the rancor surrounding the presidential election overshadowed anything that had been done to that point. With over 70,000 hospitalizations and 1,300 deaths attributed to COVID-19 in St. Louis County during 2020, it is the type of year we hope never to repeat. The challenges of administering elections during this global pandemic were myriad and seemingly insurmountable at first. The Election Board staff and voters, however, overcame these obstacles to pull off four successful County-wide elections throughout 2020.

Before we discuss the challenges and solutions of 2020, we must first mention the large undertaking of purchasing new voting equipment in 2019. Going into 2019, St. Louis County's voting equipment was 14 years old and becoming increasingly troublesome to maintain. Confident that this aging technology would not serve the voters well through the 2020 elections, the Directors and Board realized that it was time for a change. A request for proposals was issued in January of 2019 culminating in the purchase of a new print on demand based system in September of that year. There is probably nothing more challenging for an election office than transitioning to new voting equipment and the process we went through is chronicled on page 3.

As previously mentioned, 2020 brought challenges like no other which required fast and dramatic changes to the way elections were conducted in St. Louis County. Of course, absentee voting underwent one of the more extreme changes. Prior to the onset of the pandemic only about 10% of the ballots cast in each election were absentee ballots. As the November election rolled around, over 40% of the ballots cast were of the absentee variety. This drastic shift in the method of voting necessitated a new focus on the way we mailed and accepted absentee ballots. Check out the feature on pages 33-34 to get an in depth look at the ways absentee voting changed in 2020.

Not only did the absentee voting experience change, the story on pages 16-19 details the ways in which the in-person election day voting experience looked different in 2020. New safety precautions were put in place for each polling place to make voters and election judges as safe as possible. Additionally, we allowed voters to vote at any polling place in St. Louis County. With the uncertainty as to whether enough buildings and election judges would be available for each election, we tried to build maximum flexibility into Election Day voting. In an effort to buttress this change, voters received polling place notification cards informing them of the five nearest polling places to their precinct. Our GIS team also developed an app that allowed voters to see how many people were in line at each polling place. This combination of innovation ensured that lines at polling places were kept to a minimum.

Finally, we would like to extend our heartfelt gratitude to the staff of the St. Louis County Election Board and the thousands of St. Louis Countians who worked in our polling places. It is no exaggeration to say that these folks were true heroes in the face of this pandemic. The full time staff put in extremely long hours on the front lines of this election as there is no way to conduct an election from your home office. Our brave election judges donned their personal protective gear at the crack of dawn each Election Day so hundreds of thousands of their fellow St. Louis Countians could cast their ballots. The successful elections we administered in 2020 were a testament to the dedication of all of these folks.

Respectfully,



Rick Stream

Republican Director
Rick Stream



Eric Fey

Democratic Director
Eric Fey

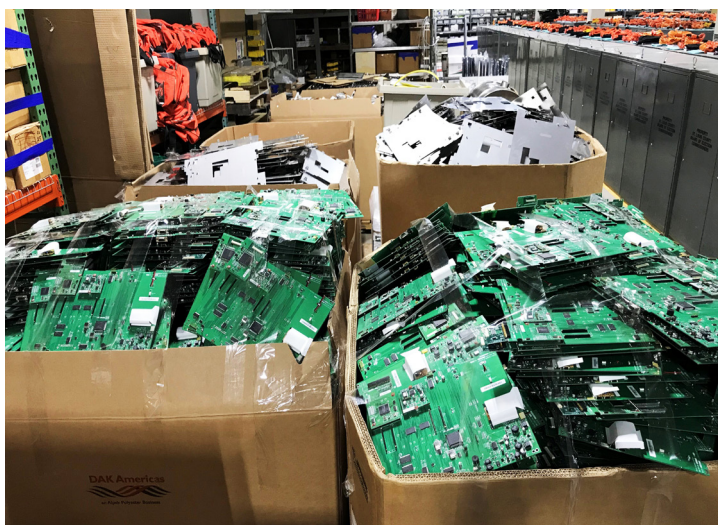
New Voting Equipment



When the Hart InterCivic equipment arrived at the Board of Elections, an acceptance test was performed to ensure functionality.

In 2005, the St. Louis County Board of Elections (BOE) purchased new voting equipment to replace the outdated punch card system. The BOE purchased a mixture of direct record electronic touch screens and optical scanners for pre-printed paper ballots. By 2019, not only was this equipment 14 years old, but the software technology was even older. The mechanical, electronic and software components were no longer in production, out of warranty and required frequent maintenance and repair. Since the BOE was desperately in need of new voting equipment, the organization developed a voting equipment replacement fund in 2015 with the intent of purchasing new equipment within the next five years.

In January 2019, the BOE published a Request for Proposals (RFP) to replace the existing equipment. Qualified vendors were invited to submit proposals through March 1, 2019. The organization sought a comprehensive update of the voting system including ballot programming and tabulation software, high speed ballot scanners for counting absentee ballots and new machines for in-person voting.



The old voting equipment was deconstructed piece by piece and recycled.

Proposals received from the vendors were evaluated and scored by an Evaluation Committee composed equally of Republican and Democratic staff members in addition to an independent cybersecurity expert. The criteria were formulated around the most important features of the product including security, quality, post-election audit capabilities, transparency and openness to public scrutiny. In the spring of 2019, the Evaluation Committee scored each RFP submission using a feedback form that included criteria such as ease of use, security, and cost. However, the cost was not to be the sole determinative factor in accepting a proposal. Election Systems & Software, Dominion Voting Systems and Hart InterCivic

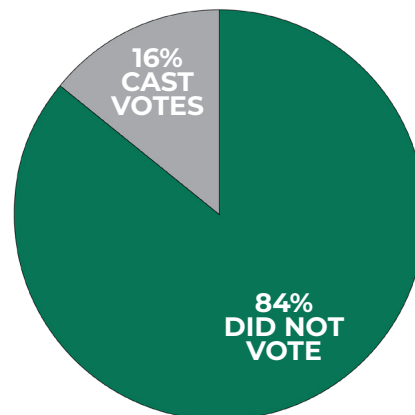
were ranked as the three finalists. During April and May, the finalists gave demonstrations of the equipment to both staff members and the general public.

Following the demonstrations, the BOE thoroughly reviewed all proposals and awarded the RFP to Hart InterCivic on September 13, 2019 for the best proposal. Once the vendor was selected, staff properly tested the new equipment, updated procedures and completed training prior to the four major countywide elections that were held in 2020.

April General Municipal Election

DATA

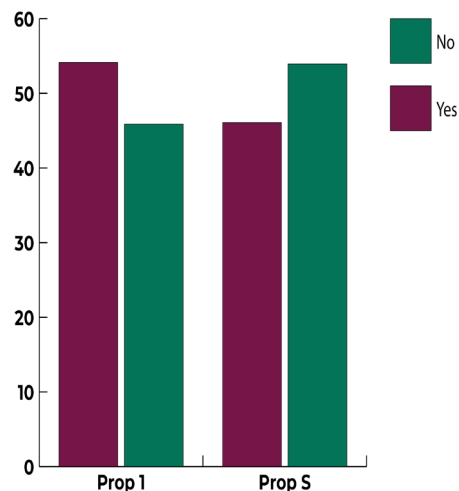
Cost: \$1,269,717.57
Registered Voters: 675,639
Votes Cast: 109,095
Absentee Mail-In: 7,233
Absentee In Person: 2,717
Polling Places: 404
Election Judges: 2,942



BALLOT ITEMS

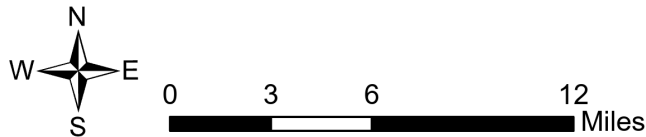
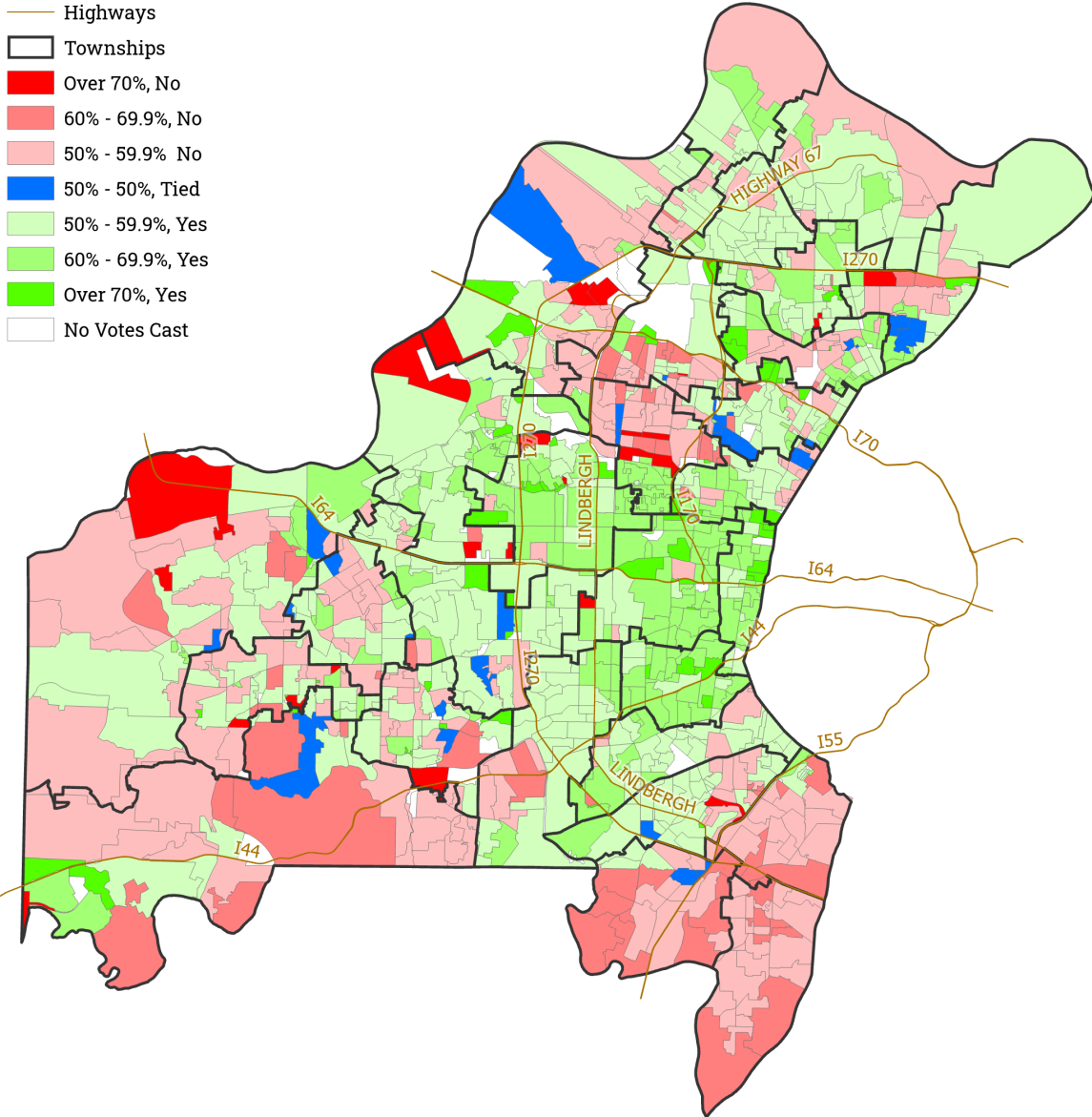
Prop 1 - County Charter to be amended to provide for the Office of the County Counselor to have three divisions serving the legislative, executive and judicial branches of County Government.

Prop S - MSD Stormwater Capital Rate increase upon all customers based on the amount of area on the property of each customer to provide revenue to fund capital improvements for flooding and erosion control.



April General Municipal Election

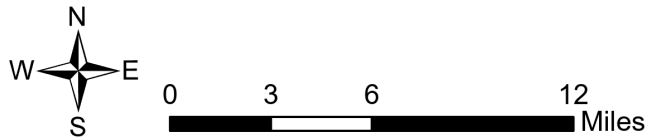
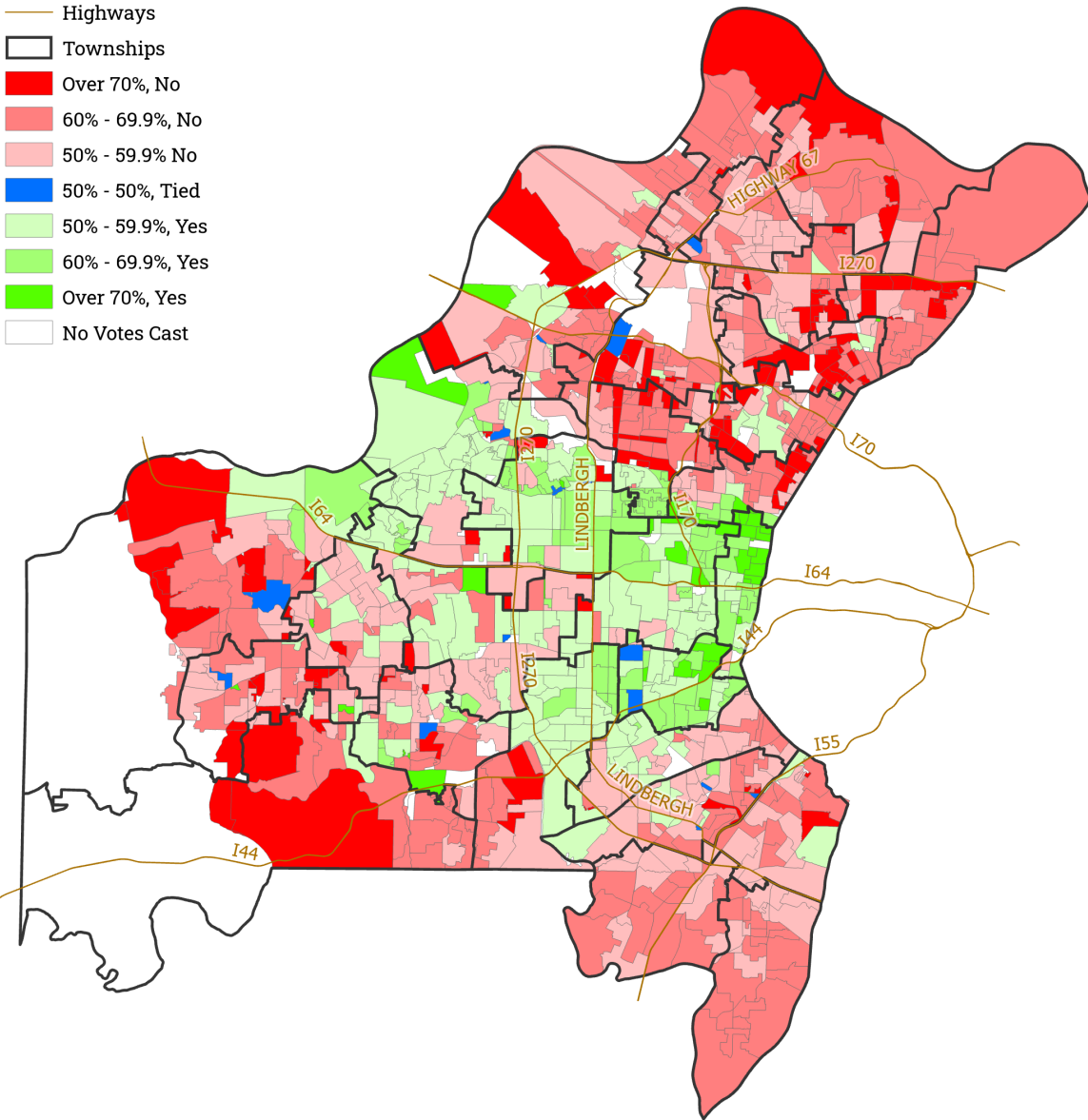
COUNTY CHARTER AMENDMENT 1 (County Counselor) Election Results by Lead Precinct



Choice	Total Votes	Percent
Yes	55,706	54.14%
No	47,182	45.86%

April General Municipal Election

MSD PROPOSITION S (Stormwater Rates) Election Results by Lead Precinct

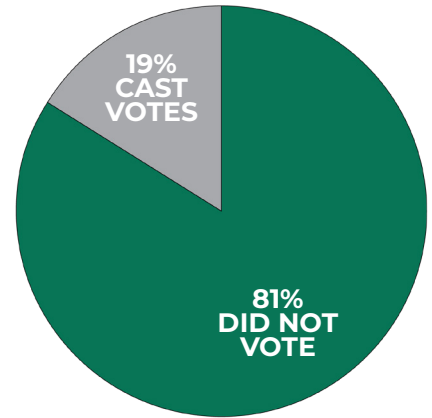


Choice	Total Votes	Percent
Yes	47,831	46.07%
No	55,989	54.93%

June Runoff Election

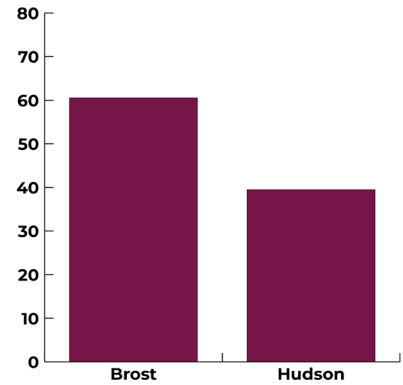
DATA

Cost: \$2,267.25
Registered Voters: 3,780
Votes Cast: 717
Absentee Mail-In: 30
Absentee In Person: 23
Polling Places: 1
Election Judges: 0



BALLOT ITEMS

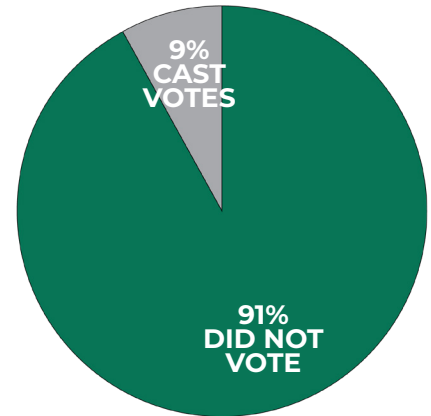
Runoff election in which Larry Brost and David Hudson were running for City of Wildwood - Council Member Ward 1.



August Special Election

DATA

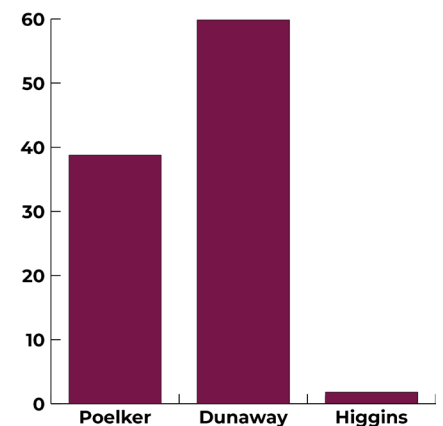
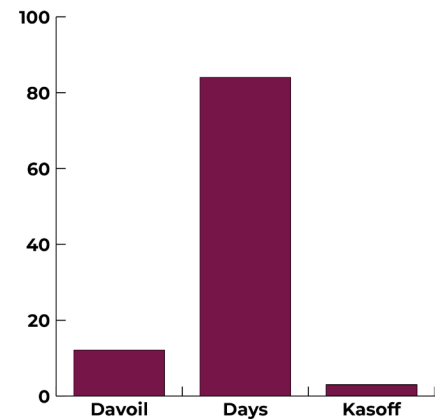
Cost: \$235,608.12
Registered Voters: 168,968
Votes Cast: 14,400
Absentee Mail-In: 1,695
Absentee In Person: 397
Polling Places: 92
Election Judges: 598



BALLOT ITEMS

County Council District 1 - Special election in which Sarah Davoli, Rita Heard Days and Nicholas (Nick) Kasoff ran for County Council District 1.

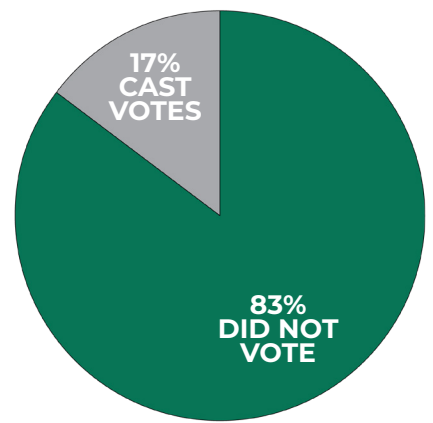
County Council District 2 - Special election in which Amy Poelker, Kelli Dunaway and Jim Higgins ran for County Council District 2.



November Special Election

DATA

Cost: \$112,297.37
Registered Voters: 53,086
Votes Cast: 9,059
Absentee Mail-In: 449
Absentee In Person: 119
Polling Places: 30
Election Judges: 178



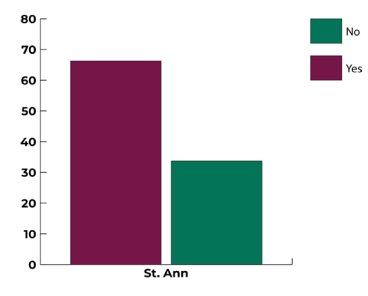
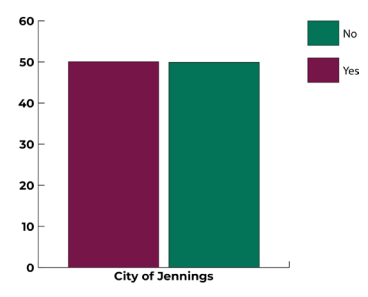
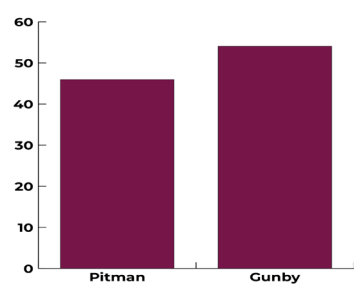
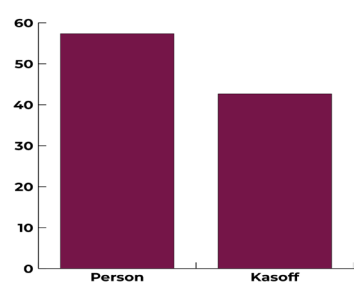
BALLOT ITEMS

State Representative District 74 - Special election in which Mike Person and Nicholas (Nick) Kasoff ran for State Representative District 74.

State Representative District 99 - Special election in which Lee Ann Pitman and Trish Gunby ran for State Representative District 99.

City of Jennings - City of Jennings sales tax rate of one-half of one percent for economic development projects.

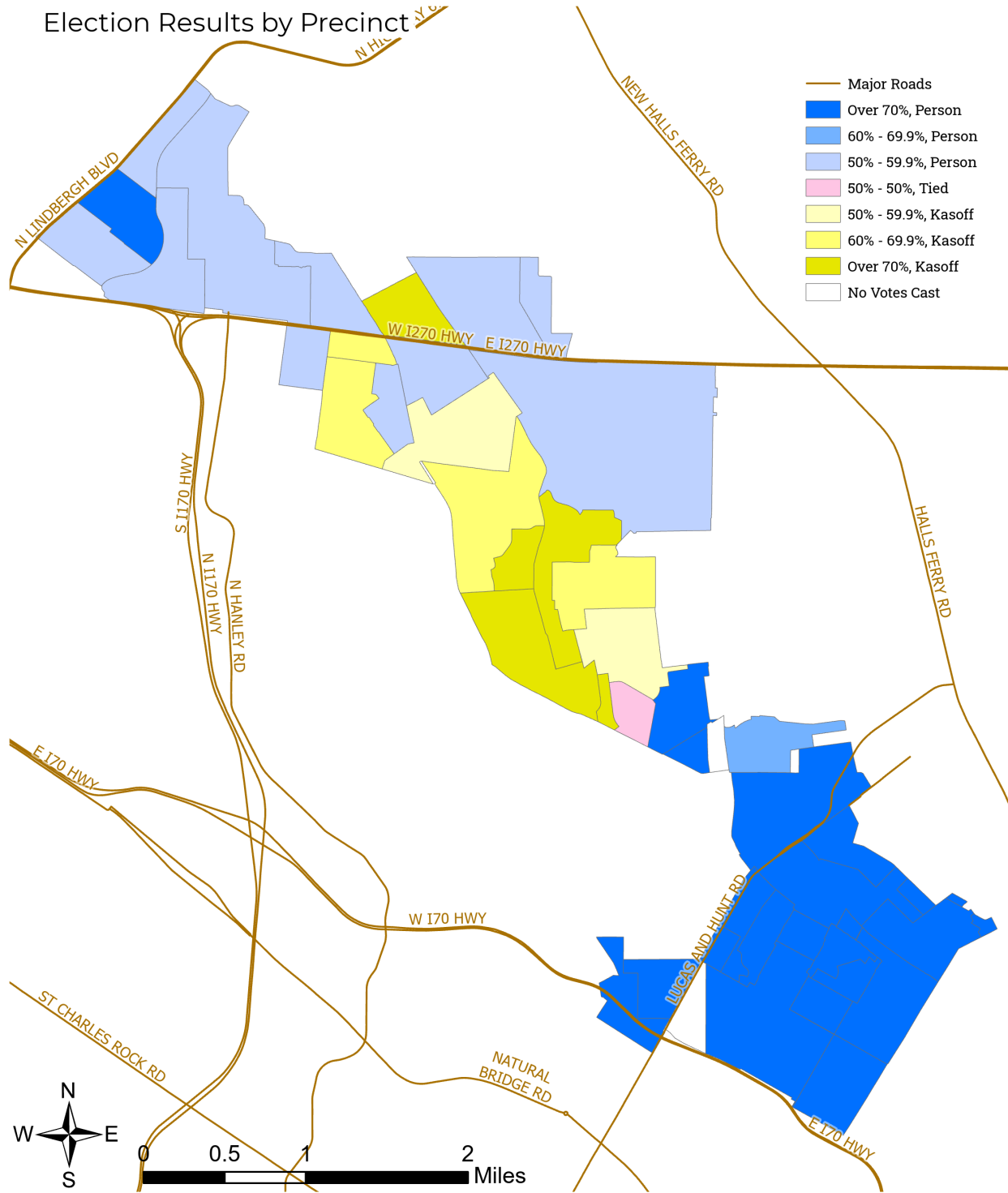
St. Ann Transportation Development District - Transportation Development District in St. Ann for the purpose of (1) developing the repair, maintenance, construction and reconstruction of all streets and roadways; (2) installation of streetscape, signage and street lighting; (3) installation and relocation of utility improvements and other right-of-way improvements; (4) improvements to bus stops; and (5) resurrection of a bus stop.



November Special Election

74TH STATE REPRESENTATIVE

Election Results by Precinct

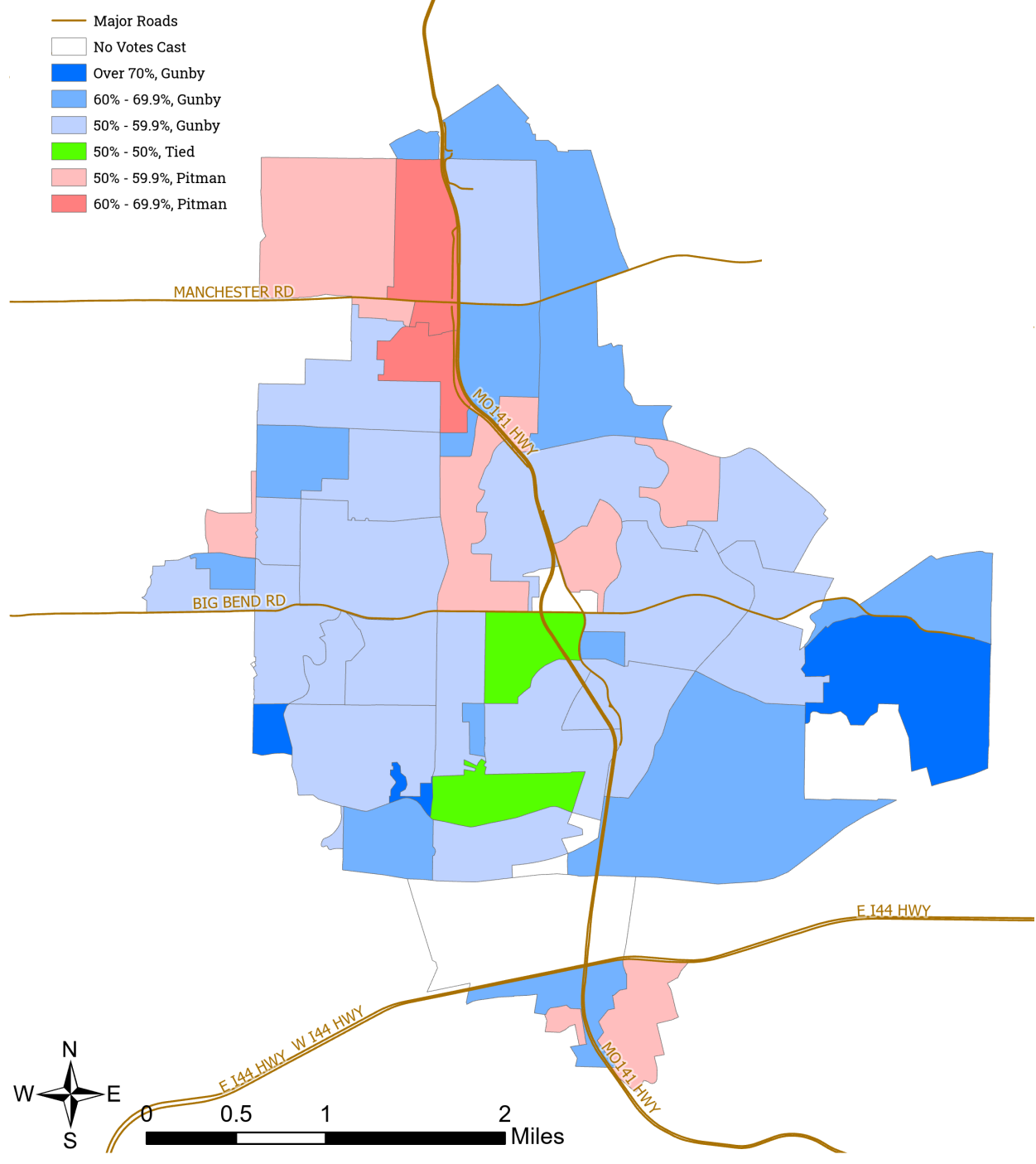


Choice	Total Votes	Percent
Mike Person	813	57.33%
Nicholas (Nick) Kasoff	605	42.67%

November Special Election

99TH STATE REPRESENTATIVE

Election Results by Precinct

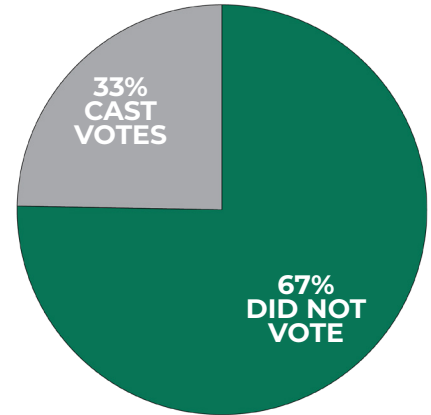


Choice	Total Votes	Percent
Lee Ann Pitman	2,855	45.96%
Trish Gunby	3,357	54.04%

March Presidential Primary Election

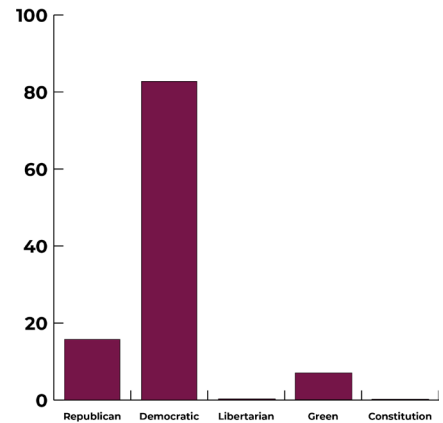
DATA

Cost: \$1,634,811.50
Registered Voters: 638,903
Votes Cast: 209,134
Absentee Mail-In: 14,161
Absentee In Person: 7,568
Polling Places: 357
Election Judges: 3,092



BALLOT ITEMS

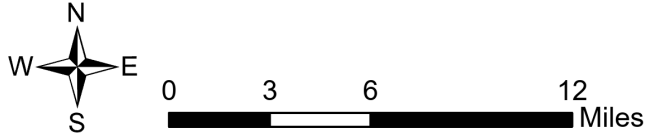
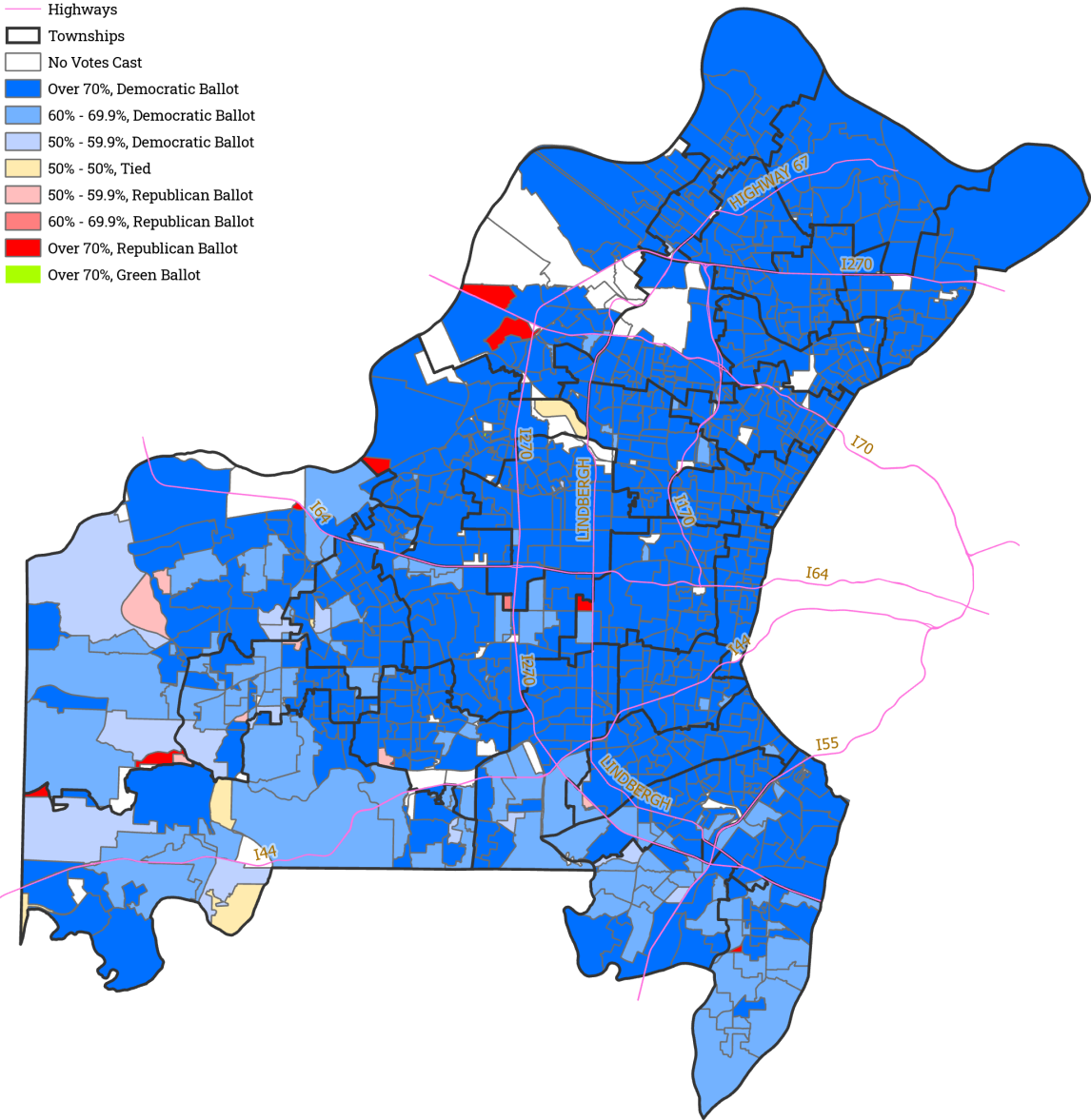
Presidential Primary Preference Election for the Republican, Democratic, Libertarian, Green and Constitution parties.



March Primary Election

PRESIDENTIAL PRIMARY BALLOT CHOICE

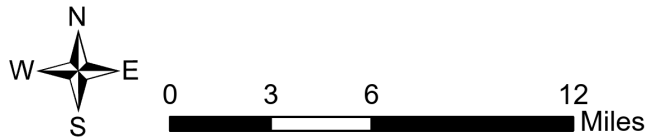
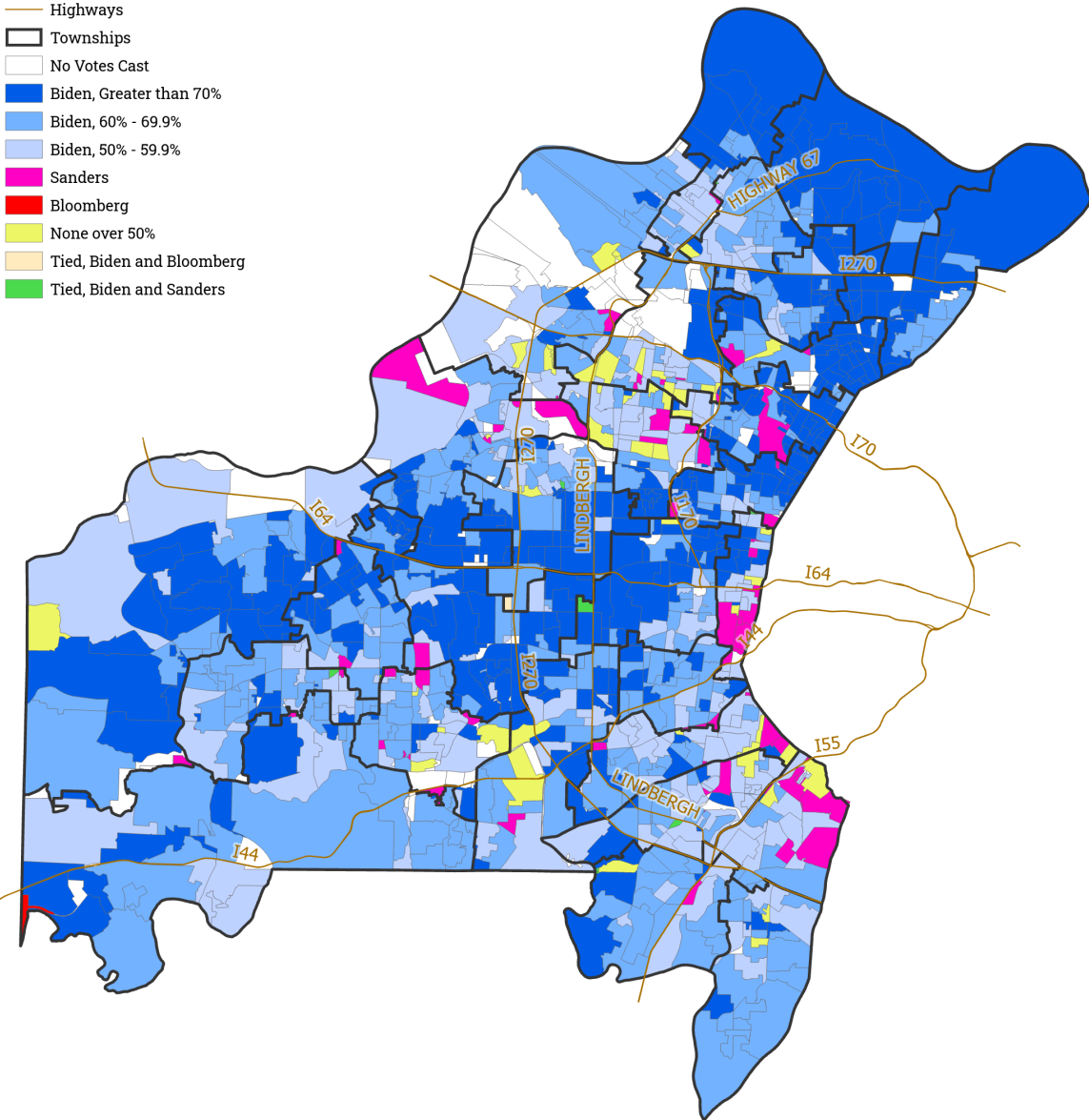
Election Results by Precinct



Choice	Total Votes	Percent
Republican	57,021	22.42%
Democratic	189,157	74.37%
Libertarian	879	0.35%
Green	218	0.09%
Constitution	153	0.06%
Non-Partisan	6,921	2.072%

March Primary Election

DEMOCRATIC PRESIDENTIAL PRIMARY Election Results by Precinct



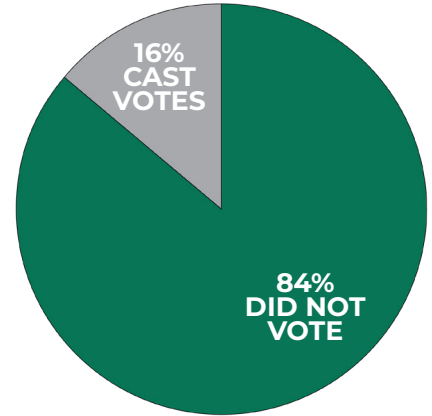
Choice	Total Votes	Percent
Joseph R. Biden	112,663	65.13%
Bernie Sanders	50,372	29.12%
Michael R. Bloomberg	3,884	2.25%
Elizabeth Warren	2,078	1.20%
Tulsi Gabbard	828	0.48%
Amy Klobuchar	759	0.44%

June General Municipal Election

(election moved from April 2020 by Court order)

DATA

Cost: \$1,008,882.16
Registered Voters: 638,717
Votes Cast: 102,594
Absentee Mail-In: 44,484
Absentee In Person: 1,080
Polling Places: 159
Election Judges: 1,439



BALLOT ITEMS

101 entities within St. Louis County had candidates and issues on the ballot.

Voting During a Pandemic

Like many other aspects of our lives, the COVID-19 pandemic had a significant impact on how people voted in St. Louis County in 2020. Fortunately, the St. Louis County Board of Elections (BOE) was able to minimize the impact on voters through innovative solutions and safety protocols.

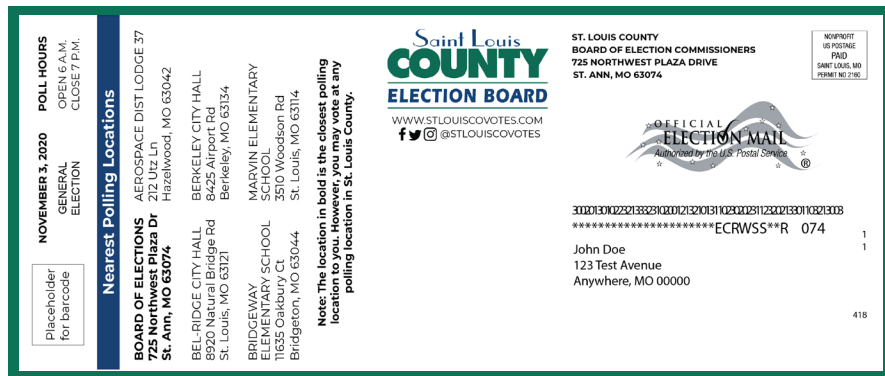
Keeping voters and election workers safe throughout the pandemic was of paramount concern during the 2020 election cycle. St. Louis County's first case of COVID-19 was confirmed just days prior to the Presidential Preference Primary in March 2020, and the need to address the pandemic continued through three subsequent countywide elections in June, August, and November. While the need to manage the impact of the pandemic was a continual challenge, COVID-19 accelerated new approaches and innovation at the BOE.

One significant innovation that transformed the voting experience during the pandemic was the ability of St. Louis County voters to vote at any polling place. Historically, voters voted at an assigned polling location. This change was especially significant during the pandemic because it eliminated the movement of voters who showed up at an incorrect poll, allowed voters to choose polls with shorter waits, and increased the BOE's flexibility to redirect voters, if necessary.

This innovation was possible because of the BOE's implementation of its new Hart InterCivic voting equipment, with the ability to create on-demand ballots, combined with the use of electronic poll books containing the database of all registered voters in St. Louis County.

In June, still in the grip of the pandemic, all private venues (assisted living facilities, churches, etc.) had pulled out of polling place commitments. The BOE knew it needed to redirect voters to vote at other

polling locations due to these unexpected disruptions. By necessity, the ability to vote anywhere got underway in the June election with very little time to educate voters. No voters were turned away from being at the "wrong" polling place. The smooth implementation of this approach encouraged the BOE Commissioners to formalize the vote anywhere option at their July Board meeting.



An example of the Notice of Election card sent to registered voters prior to the November General Election.

Two weeks prior to the August Primary Election, the BOE began educating election judges and voters on the vote anywhere option. Despite the short turnaround, 11,000 voters voted at a polling place other than their assigned location, which represented 6.4% of in-person voters. In preparation for the November General Election, the BOE made a significant push to inform voters through press releases, briefings, social media platforms, and the notice of election card about their options on how and where to vote.

On November 3rd, 88,907 voters in St. Louis County voted at a polling place outside of their home precinct, representing nearly a third (29%) of all in-person voters. For whatever reasons, voters chose their place to vote – proximity to work, school, family, or for a shorter line – the option proved convenient, well received, and made easier with the help of a Polling Place Lookup App and Line Tracker App (see page 25).

Voting During a Pandemic

At the polls, the BOE also took precautions to protect voters and poll workers from spreading the virus by providing personal protective equipment (PPE). Knowing very little about the virus' potential impact during the March election, masks were supplied to voters and poll workers but were not yet required to be worn. By the June election, the BOE had increased the amount of PPE at polling places to include gloves, sanitizing solution and social distancing markers. Masks were once again supplied to voters and poll workers but, while still optional for voters, the BOE now required them for poll workers. For the August and November elections, PPE was again provided, but the BOE also created a new poll worker position – Safety Coordinator. Among other duties, these workers were responsible for monitoring social distancing, sanitizing all equipment and distributing new stylus pens for each voter to use and keep.

The final innovation executed in 2020 was the establishment of a drive-through voting site solely designated for voters who had tested positive for COVID-19 and/or had been required to quarantine. Leading into the November General Election, the BOE received an influx of inquiries from voters who met these requirements. Staff quickly worked with St. Louis County's Department of Public Health to develop a system to collect a voter's information and verify their health status. Initially, once a positive COVID-19 test result or quarantine order was verified, the BOE sent a bipartisan team outfitted in PPE to the voter's residence to allow them to cast their vote while remaining socially distanced. Unfortunately, the need for this service quickly escalated to more than staff could manage.

With five days until Election Day, the BOE developed a new, more manageable solution. Ultimately, it was decided that a drive-through voting site was needed to accommodate these voters. On the day prior to Election Day, the Parks Department constructed a large tent and the BOE hired off-duty police officers to work with the bipartisan teams to conduct voting at BOE headquarters. PPE was provided to everyone who would be interacting with voters. 942 voters utilized this service and cast their votes from their vehicles in a safe and socially distanced manner.

The combination of these innovations resulted in an unusual turnout on Election Day. 86% of voters who voted in-person cast their votes prior to 4 p.m., leaving polling places with either short or no lines when the polls closed at 7 p.m.



A member of a bipartisan team collects a ballot from a voter using the drive-through site for voters who had tested positive for COVID-19.

Voting During a Pandemic

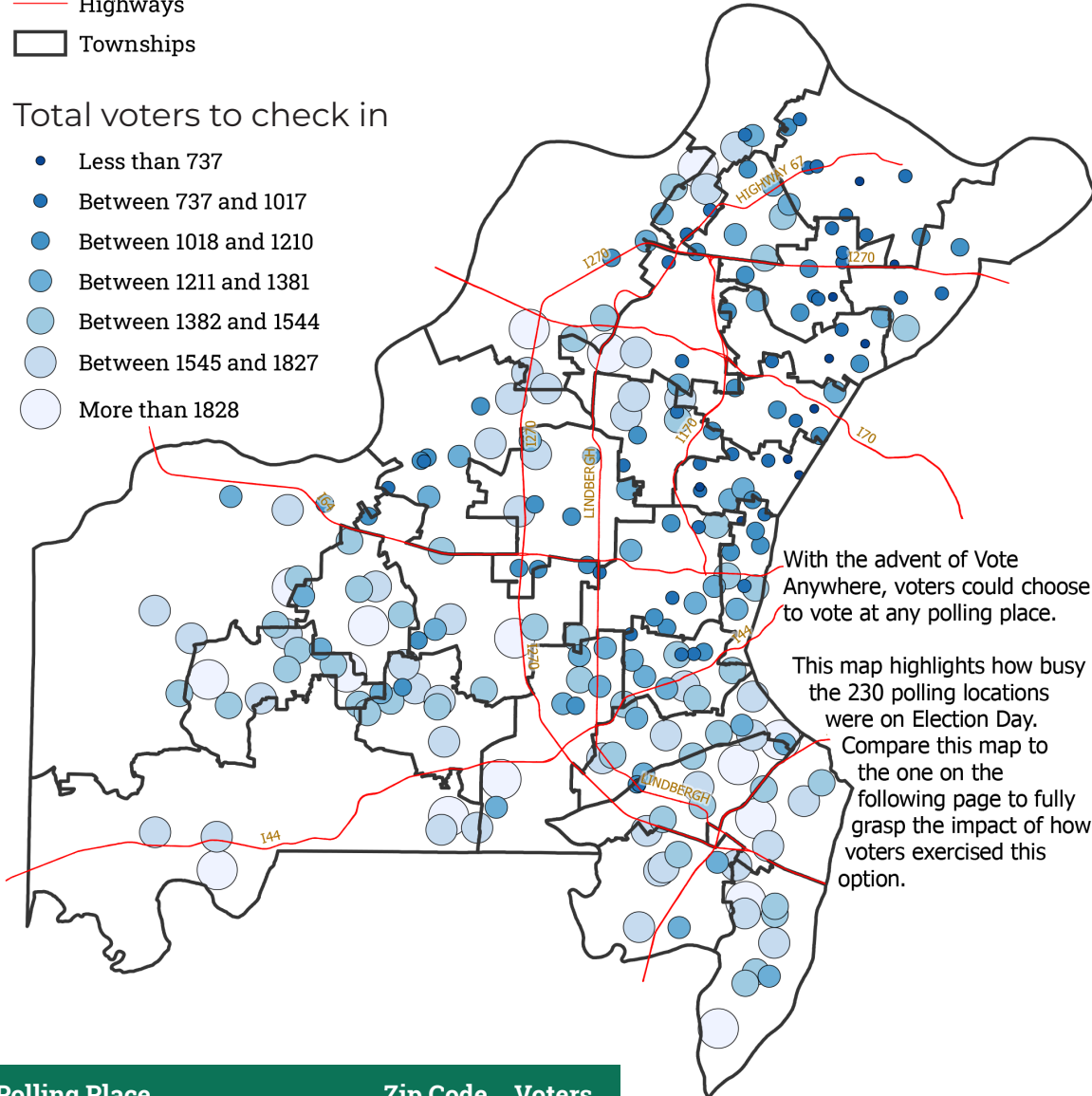
VOTE ANYWHERE: BUSIEST POLLING PLACES

Amounts grouped by Polling Place: November 2020

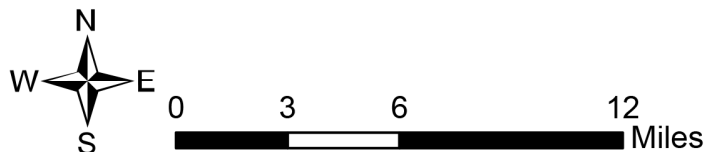
- Highways
- Townships

Total voters to check in

- Less than 737
- Between 737 and 1017
- Between 1018 and 1210
- Between 1211 and 1381
- Between 1382 and 1544
- Between 1545 and 1827
- More than 1828



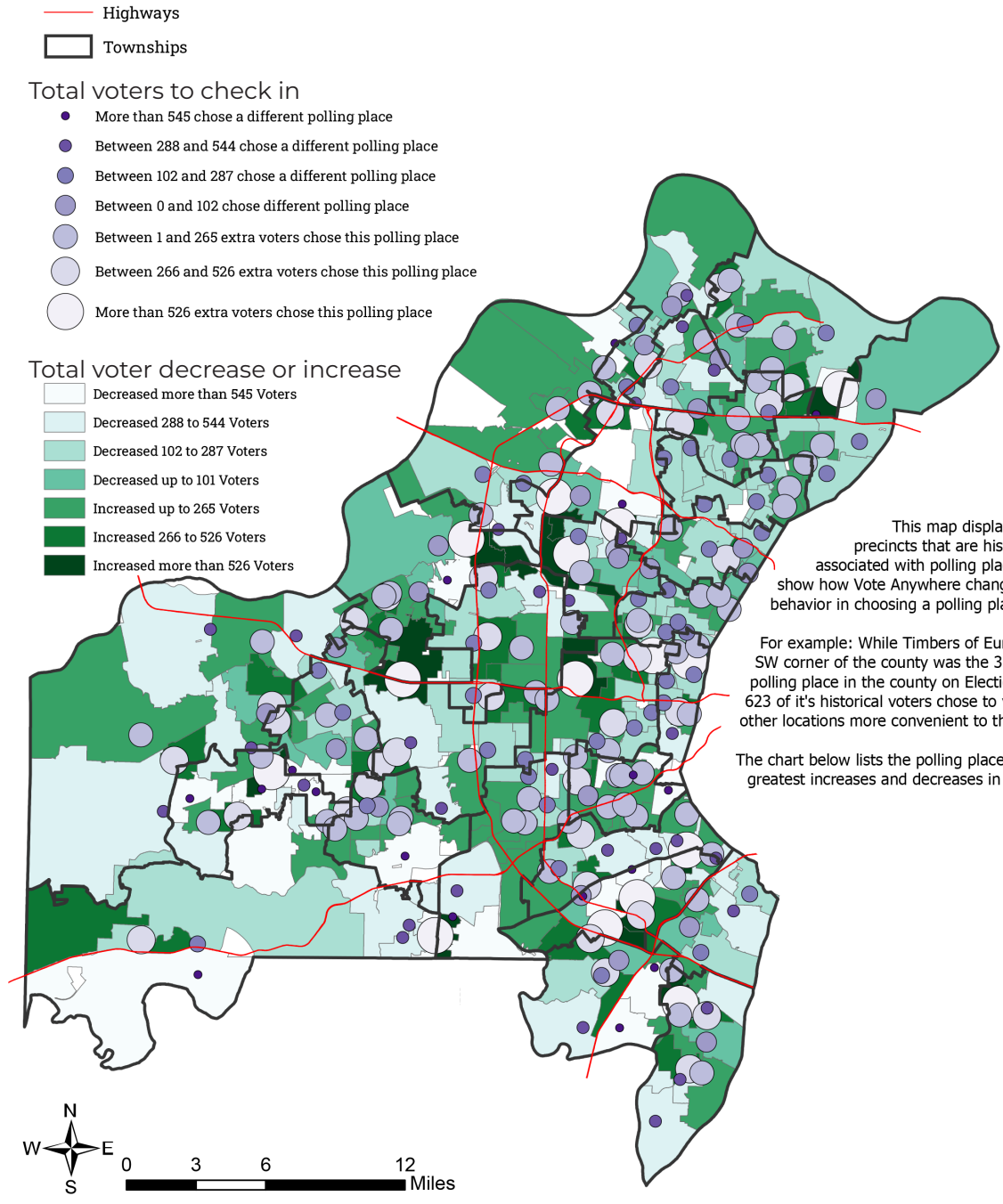
Polling Place	Zip Code	Voters
Board of Elections	63074	2,233
Bayless Elementary School	63123	2,125
Timbers of Eureka	63025	2,110
The Lodge Community Center	63131	2,075
Oakville Elementary School	63129	2,073



Voting During a Pandemic

VOTE ANYWHERE: VOTER CHOICE

Voter amounts grouped by Precinct and Polling Place: November 2020

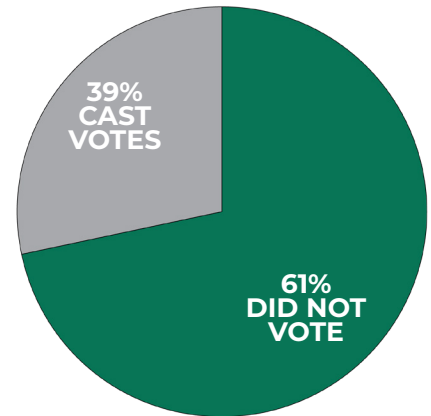


Rank	Polling Place	Zip Code	Voters	Rank	Polling Place	Zip Code	Voters
1	Board of Elections	63074	1,038	226	South County Health Ctr	63127	-738
2	Mid County Branch Library	63105	976	227	STLCC South County	63129	-790
3	Dressel Elementary School	63123	798	228	The Point at Ballwin Cmns	63021	-884
4	West County Lanes	63011	769	229	Bluebird Park Admin Bldg	63021	-933
5	Rooftop Church	63123	735	230	Valley Park Middle School	63088	-961

August Primary Election

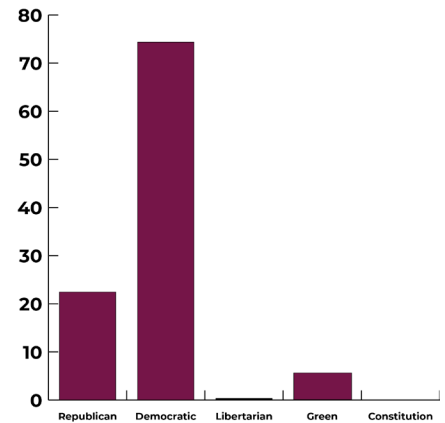
DATA

Cost: \$1,412,551.55
Registered Voters: 643,390
Votes Cast: 254,349
Absentee Mail-In: 75,065
Absentee In Person: 8,266
Polling Places: 199
Election Judges: 1,721



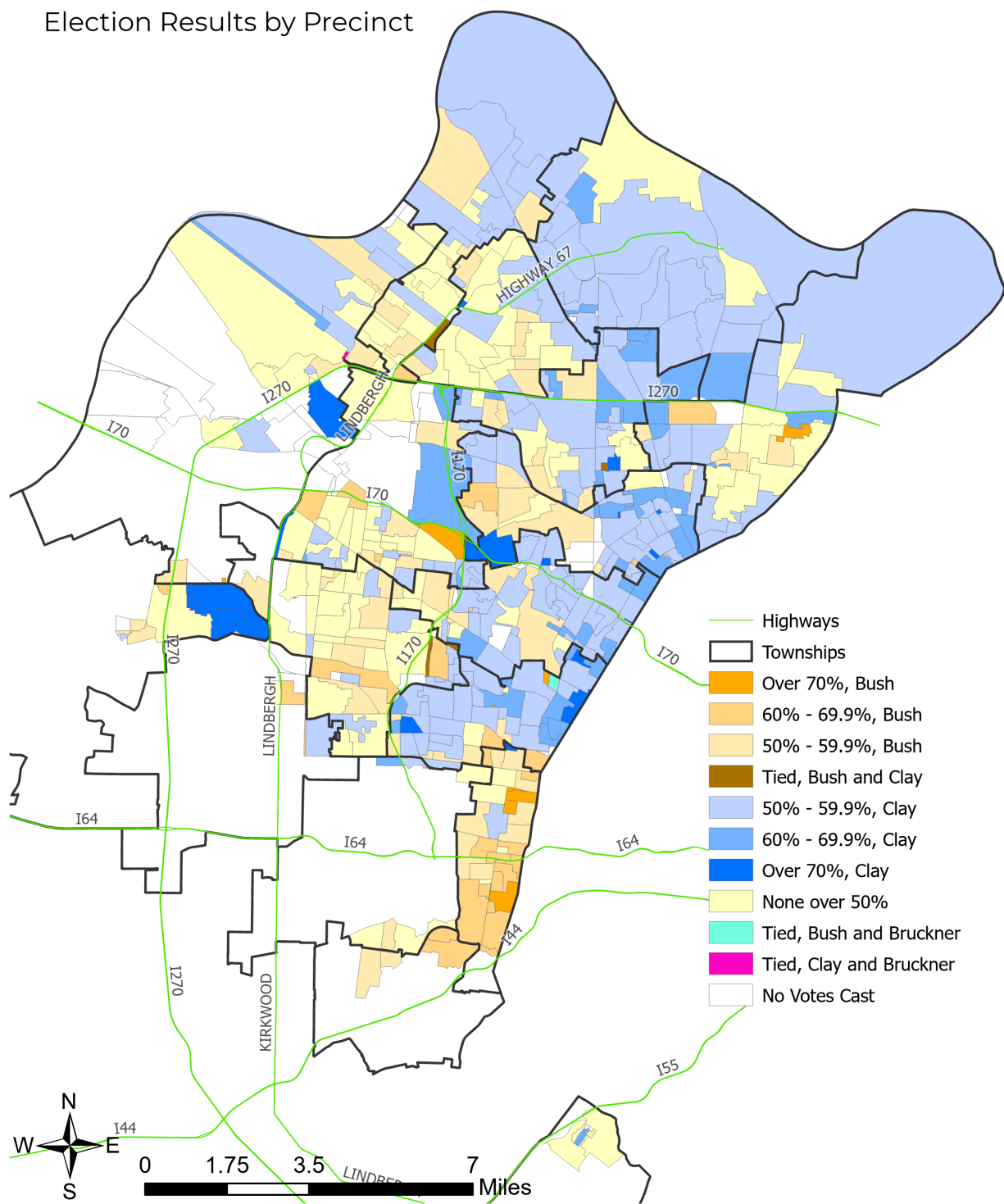
BALLOT ITEMS

Primary Election for U.S. and State Representatives, Governor, Lt. Governor, Attorney General, Secretary of State, Treasurer, and County Executive along with issues from 37 other entities.



August Primary Election

DEMOCRATIC PRIMARY U.S. REP DISTRICT 1
Election Results by Precinct



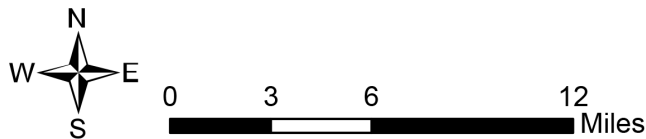
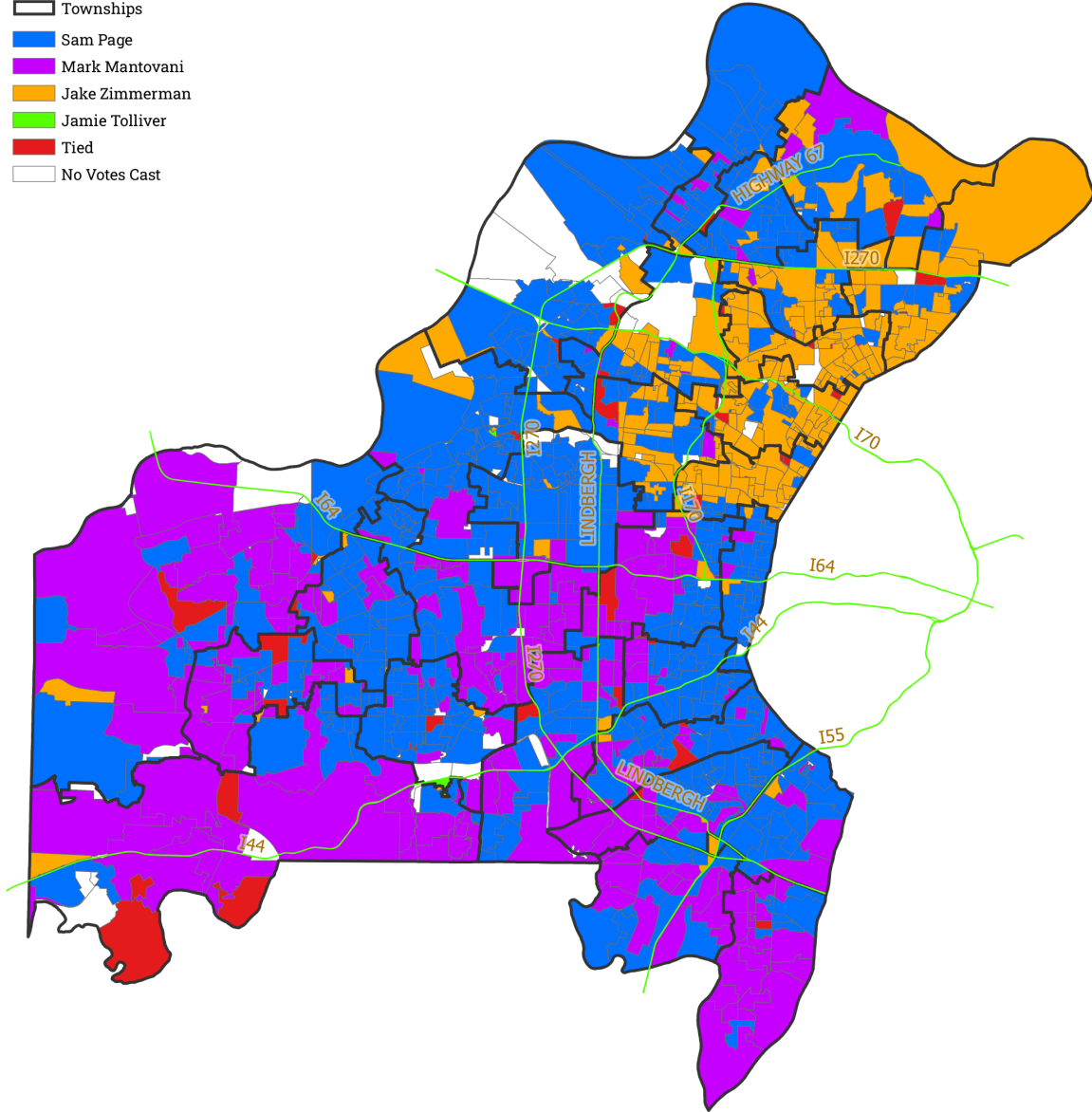
Choice	Total Votes	Percent
Cori Bush	36,538	45.88%
Lacy Clay	39,036	49.02%
Katherine (Kat) Bruckner	4,057	5.09%

August Primary Election

DEMOCRATIC COUNTY EXECUTIVE

Winner by Precinct

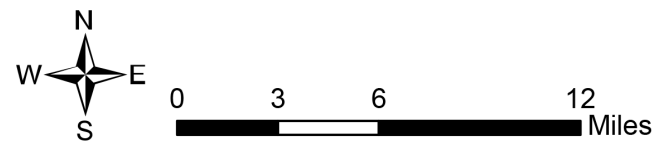
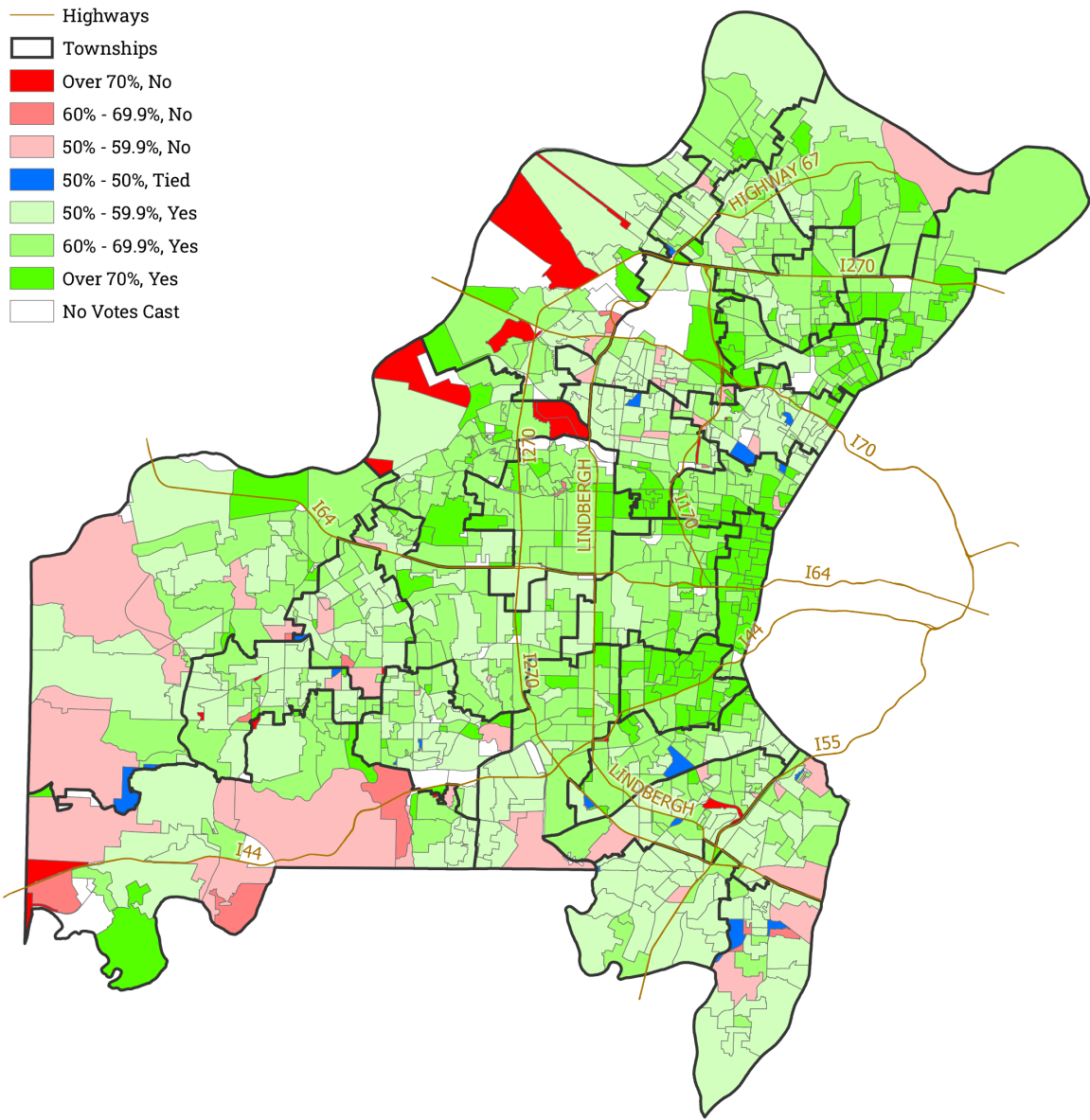
- Highways
- Townships
- Sam Page
- Mark Mantovani
- Jake Zimmerman
- Jamie Tolliver
- Tied
- No Votes Cast



Choice	Total Votes	Percent
Jake Zimmerman	45,665	24.50%
Sam Page	71,006	38.10%
Mark Mantovani	55,129	29.58%
Jamie Tolliver	14,553	7.81%

August Primary Election

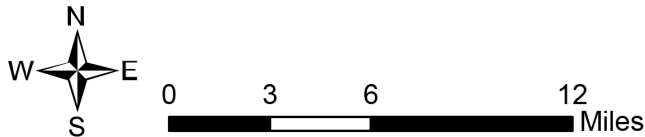
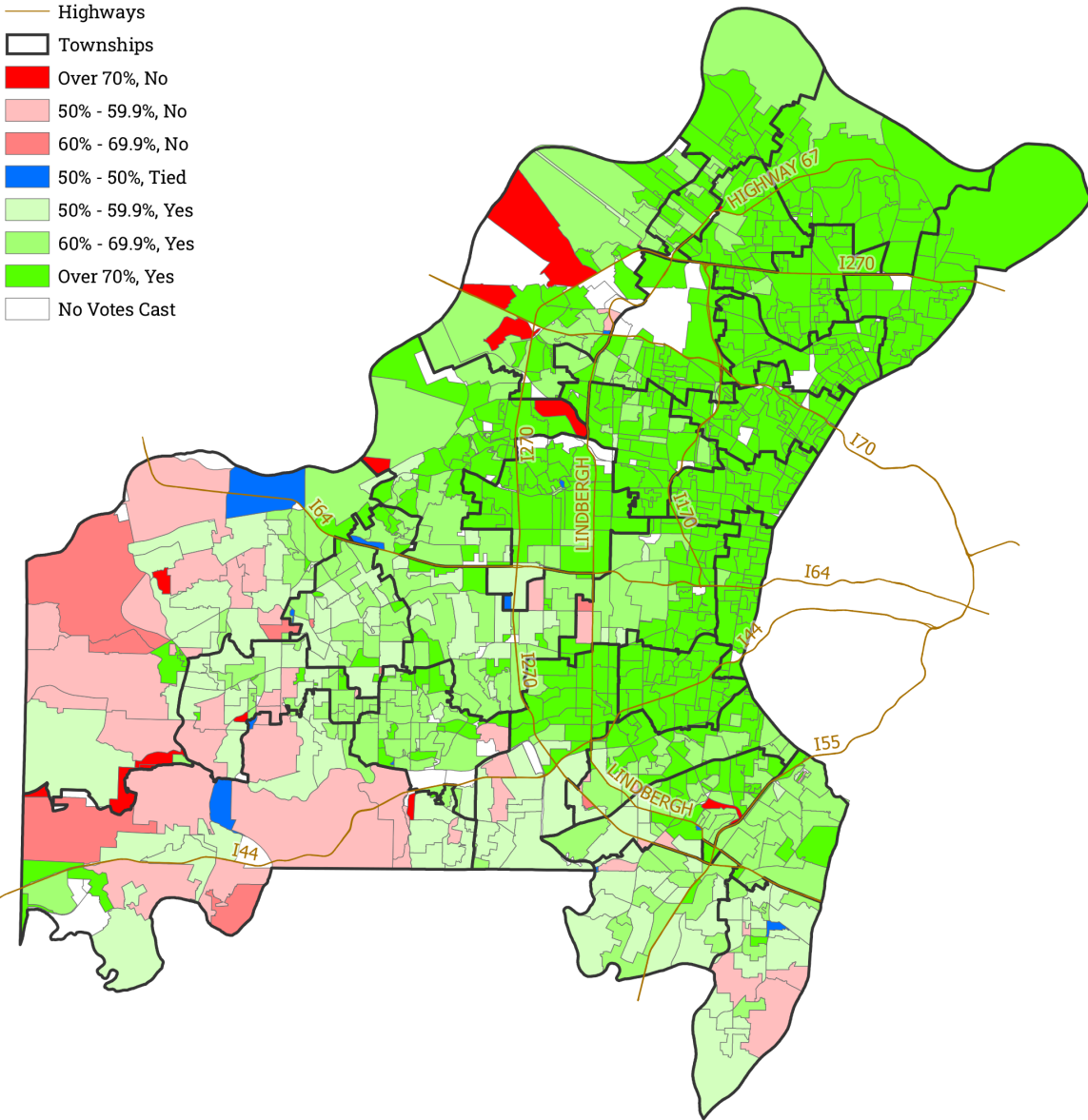
COUNTY PROPOSITION C (County Charter) Election Results by Precinct



Choice	Total Votes	Percent
Yes	150,196	62.55%
No	89,907	37.45%

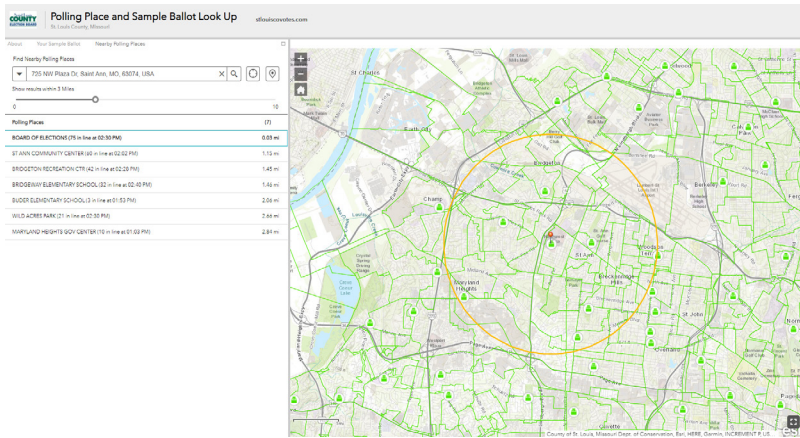
August Primary Election

CONSTITUTIONAL AMENDMENT 2 (Medicaid Expansion) Election Results by Precinct



Choice	Total Votes	Percent
Yes	182,898	72.83%
No	68,230	27.17%

Line Tracker App

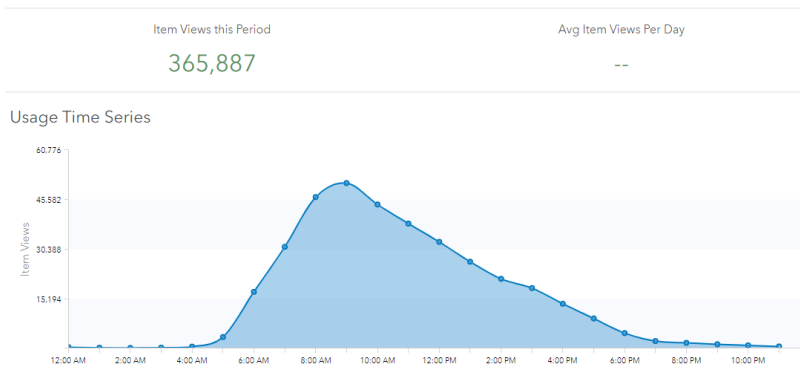


When entering a given address and radius, the line length and the time of the last update would appear for every polling place within the set parameters.

In October 2020, the St. Louis County Board of Elections (BOE) recognized the need to offer every tool possible to simplify the November General Election due to the ongoing pandemic. Because the new voting equipment allowed voters to vote anywhere, the BOE felt that voters would benefit from an app to check the line length at any given polling place to both be aware of social distancing and reduce the amount of time voters stood in line.

A few days prior to the opening of the four satellite sites stationed geographically throughout the County, the Mapping Department unveiled the Line Tracker App as a pilot program. At each location, the manager updated the line count every 30 minutes. Prior to visiting one of the sites, voters who wished to either return their absentee ballot or vote absentee in-person could check the line length on the app. As the last days of the satellite sites being open drew nearer, the ability to check the line length became even more important because, at some points during the day, some lines grew to 400+ voters.

Start Date: End Date:



The Line Tracker App, yielded more than 365,000 views between 6 a.m. and 7 p.m. on Election Day with the most views between 8 a.m. and 10 a.m.

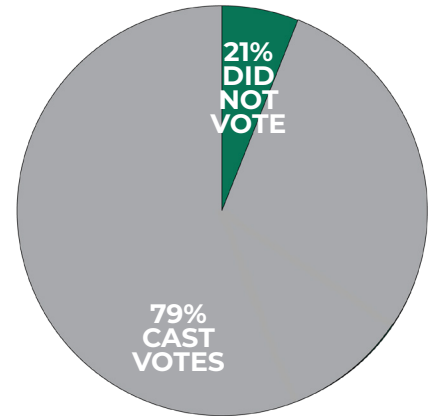
On Election Day, the Line Tracker App switched from showing the length at the satellite sites to showing the length at all 230 polling places. At each polling place, and the Safety Coordinator was responsible for updating the line count every 15 minutes. Between 6 a.m. and 7 p.m., the app was viewed 365,887 times and 30% of registered voters cast their votes at a polling place other than the location that was closest to their residence.

Although the purpose of the app was to allow voters to check the length of the lines at satellite sites and polling places, it was also used by the BOE staff to monitor the needs for additional poll workers and equipment. Since the November General Election was the first time that the vote anywhere option was heavily publicized, the number of voters that would vote at each polling place was unknown. Staff members were able to move equipment around as needed throughout the County on Election Day to accommodate the polling places that received more traffic than anticipated.

November General Election

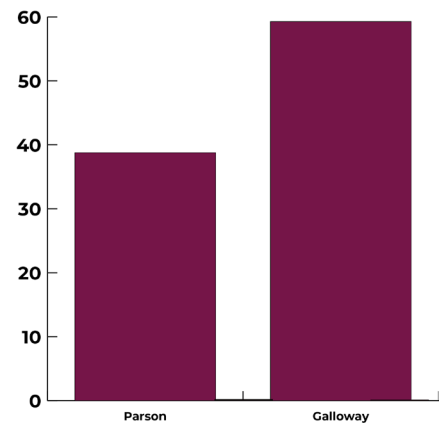
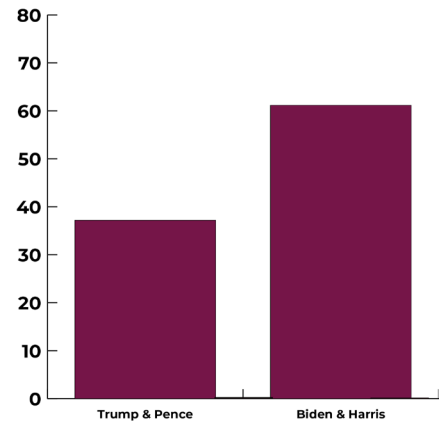
DATA

Cost: \$2,420,930.95
 (\$828,406.45 reimbursed from grant funds)
Registered Voters: 681,869
Votes Cast: 540,597
Absentee Mail-In: 151,346
Absentee In Person: 82,401
Polling Places: 230
Election Judges: 3,186



BALLOT ITEMS

General Election for President, U.S. and State Representatives, Governor, Lt. Governor, Attorney General, Secretary of State, Treasurer, State Senate, County Executive, and Judges along with issues from 8 other entities.

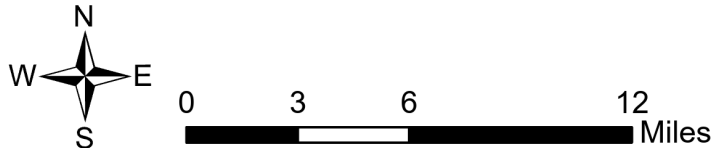
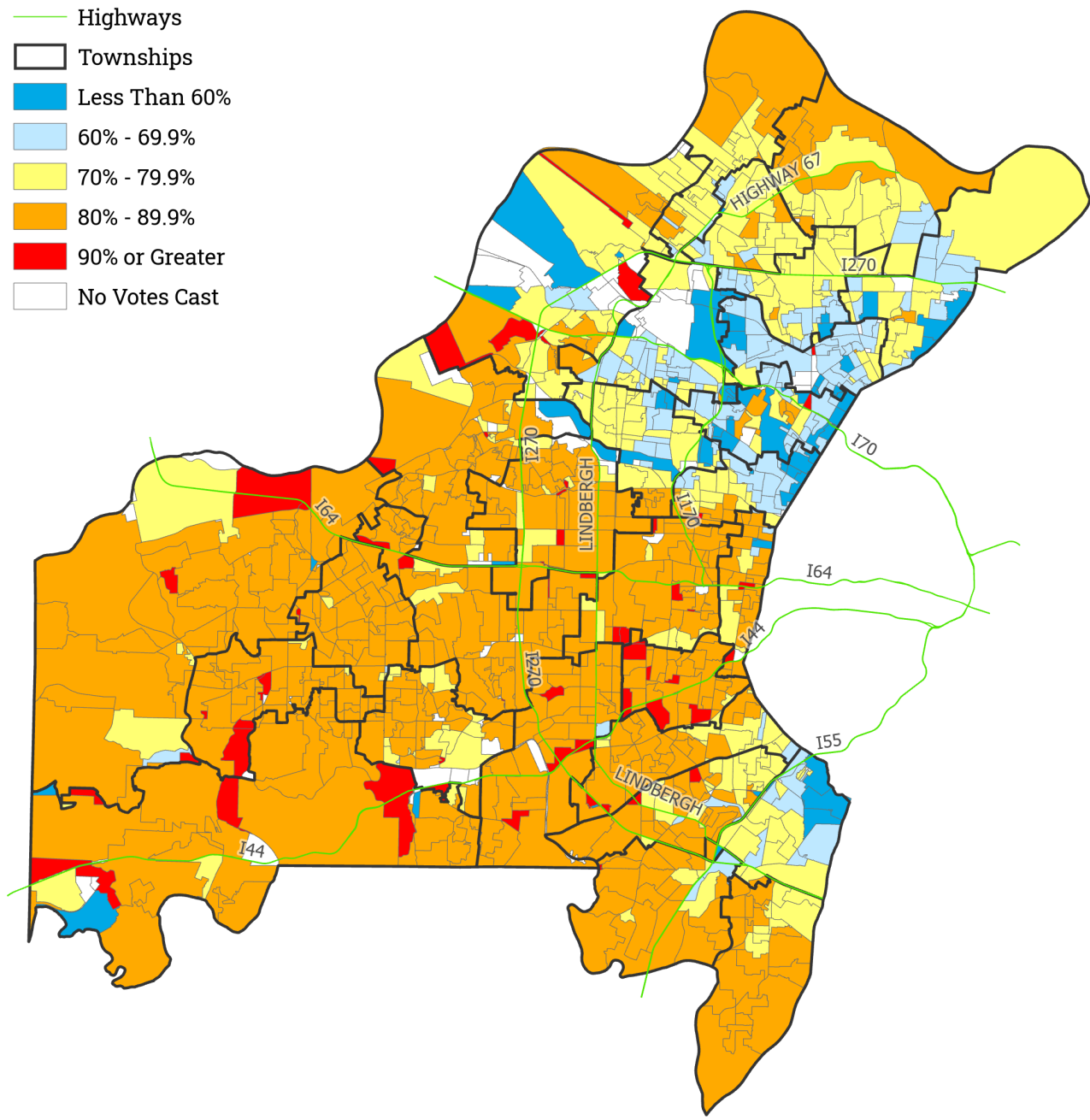


November General Election

TURNOUT

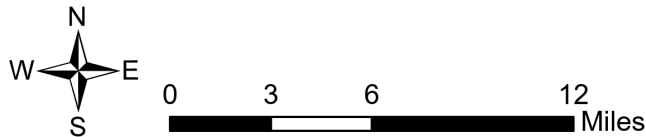
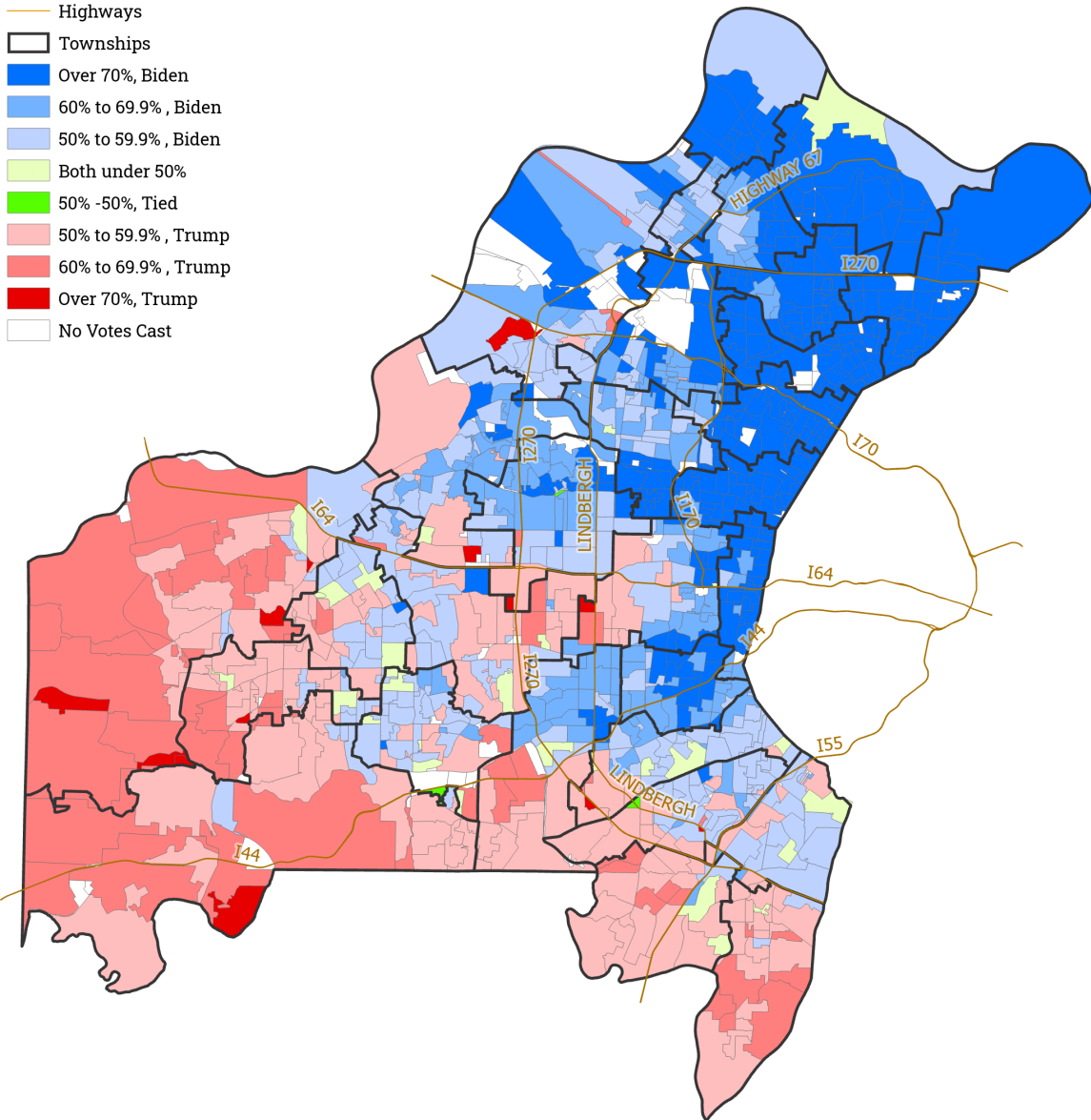
Results by Precinct

- Highways
- Townships
- Less Than 60%
- 60% - 69.9%
- 70% - 79.9%
- 80% - 89.9%
- 90% or Greater
- No Votes Cast



November General Election

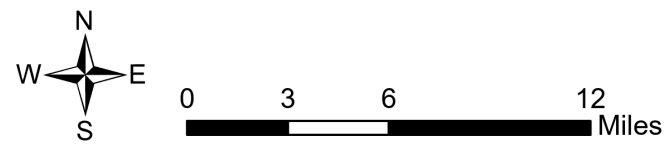
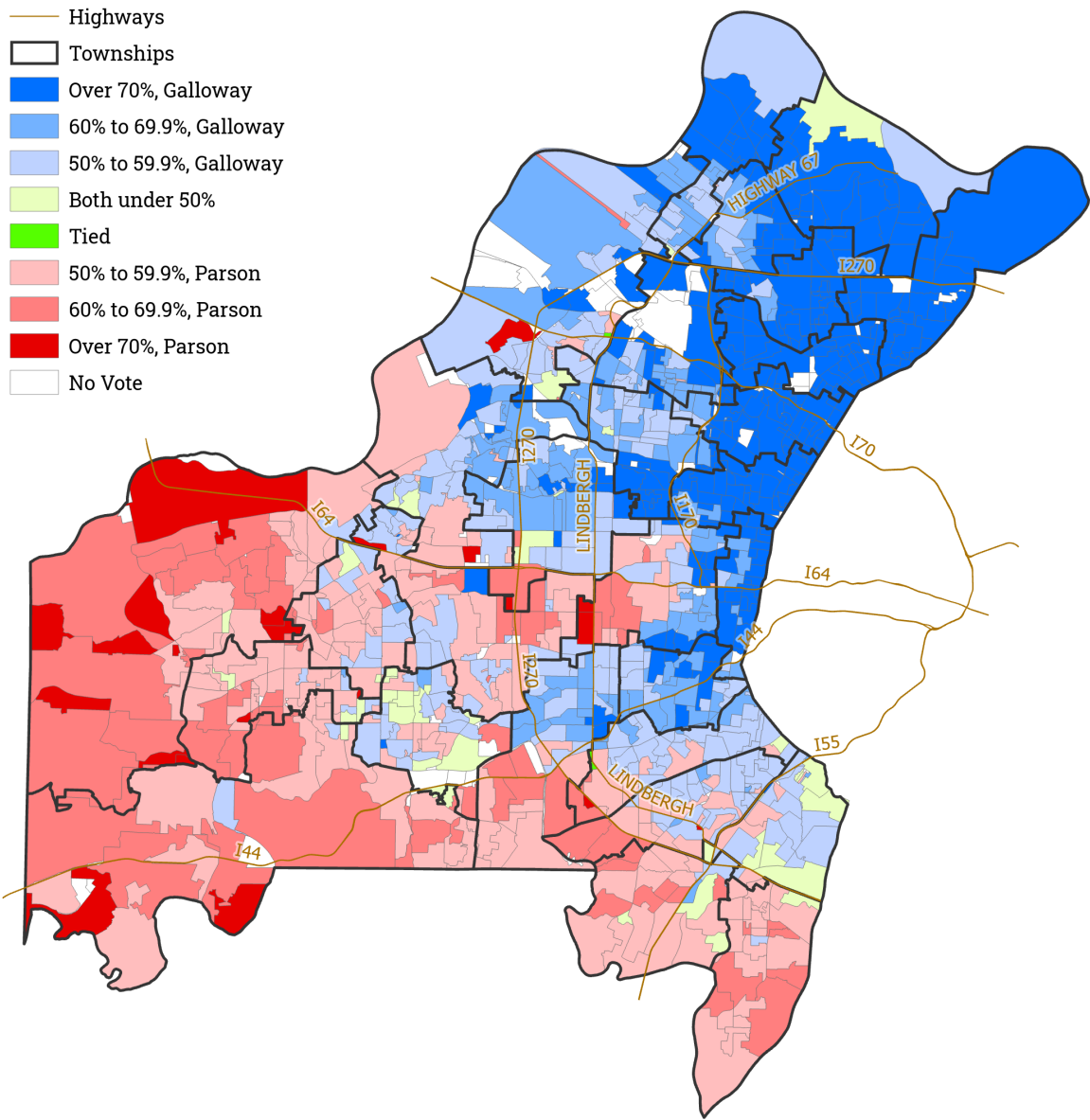
PRESIDENTIAL Election Results by Precinct



Choice	Party	Total Votes	Percent
Donald J. Trump	REP	199,493	37.19%
Joseph R. Biden	DEM	328,151	61.17%
Jo Jorgensen	LIB	6,119	1.14%
Howie Hawkins	GRN	1,650	0.31%
Don Blankenship	CON	806	0.15%
Write-ins		227	0.04%

November General Election

GUBERNATORIAL Election Results by Precinct

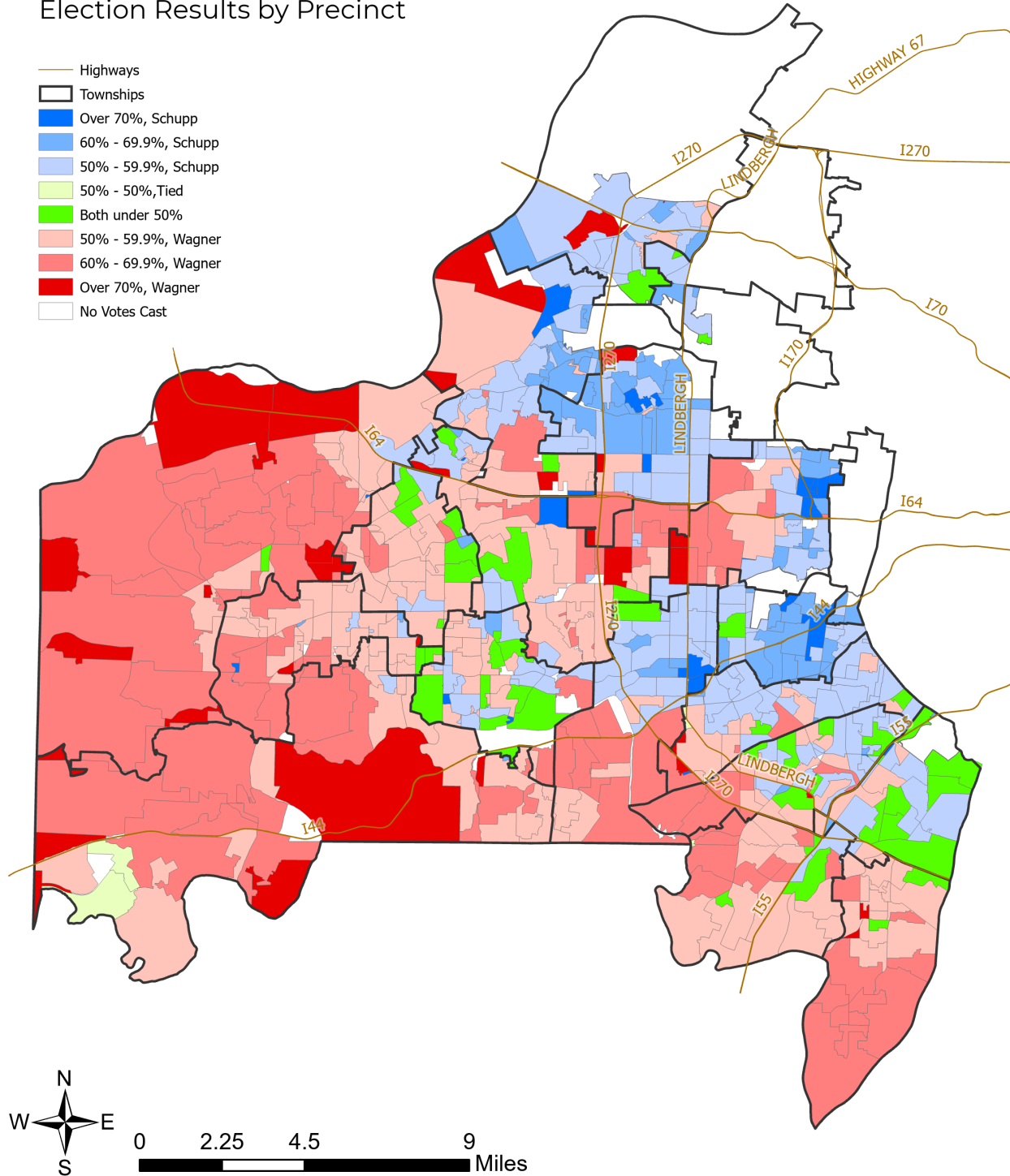


Choice	Party	Total Votes	Percent
Mike Parson	REP	207,535	38.77%
Nicole Galloway	DEM	317,327	59.28%
Rik Combs	LIB	7,009	1.31%
Jerome Howard Bauer	GRN	3,404	0.64%
Write-ins		4	0.00%

November General Election

2ND CONGRESSIONAL DISTRICT

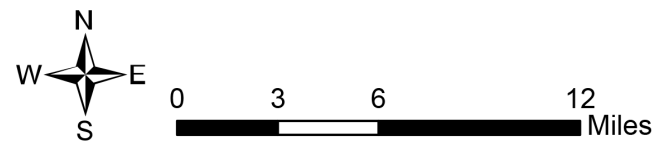
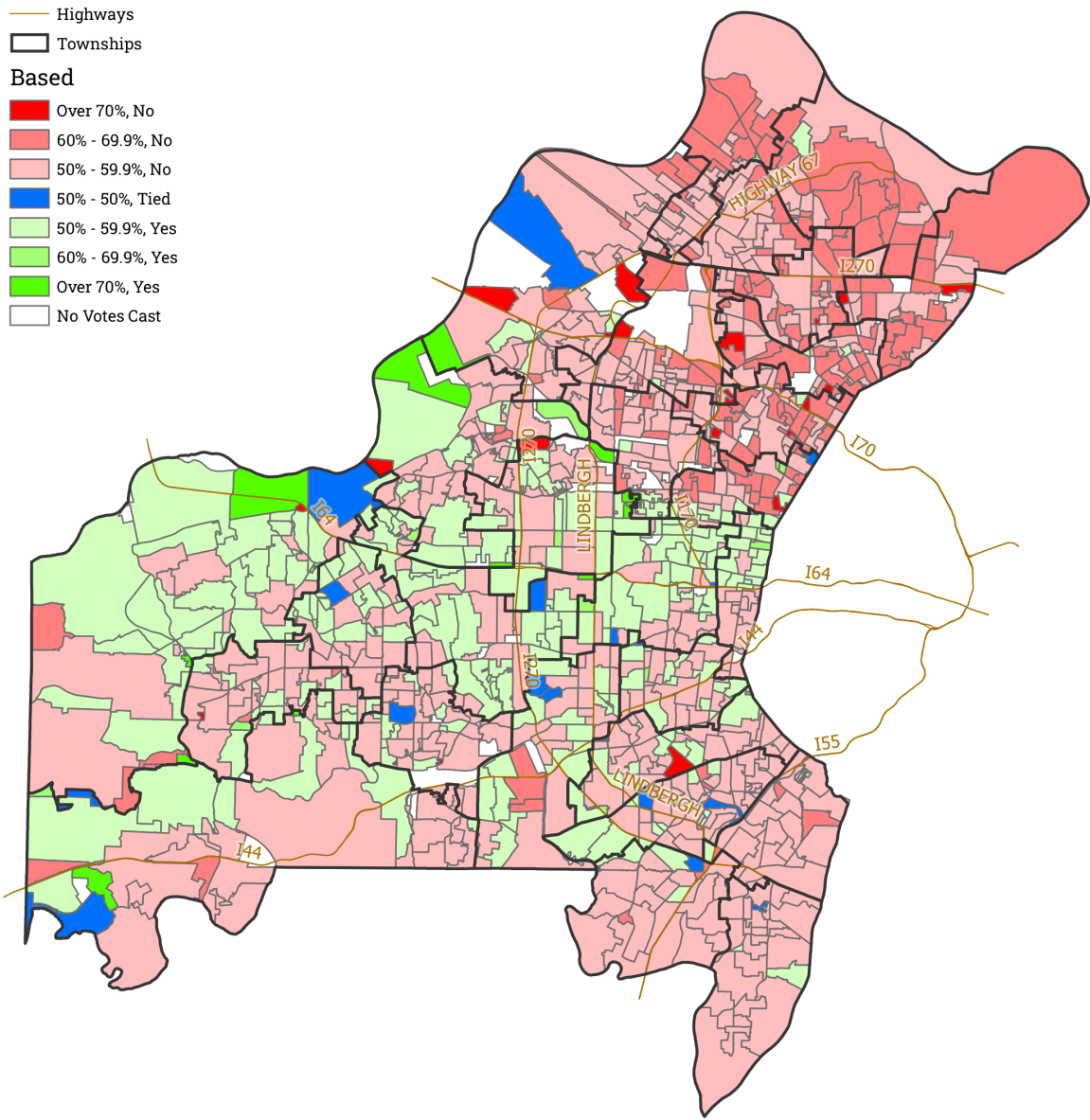
Election Results by Precinct



Choice	Party	Total Votes	Percent
Ann Wagner	REP	174,284	50.15%
Jill Schupp	DEM	165,537	47.63%
Martin Schulte	LIB	7,692	2.21%
Write-ins		4	0.00%

November General Election

CONSTITUTIONAL AMENDMENT 1 (Term Limits) Election Results by Precinct

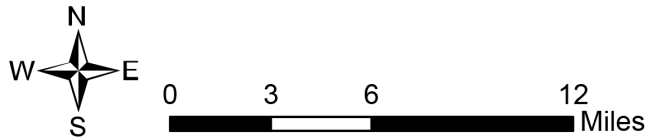
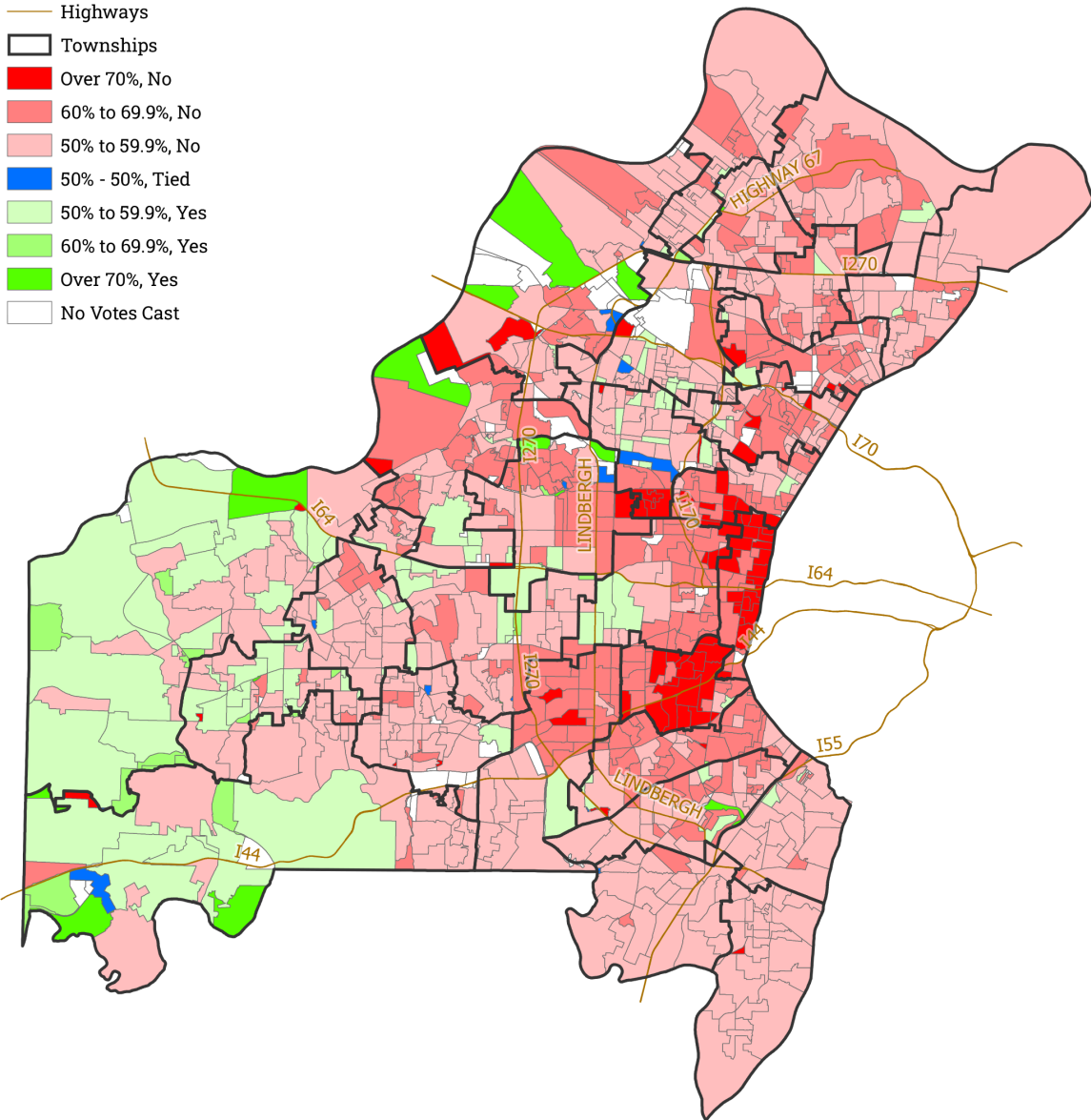


Choice	Total Votes	Percent
Yes	238,458	46.38%
No	275,721	53.62%

November General Election

CONSTITUTIONAL AMENDMENT 3 (Ethics and Redistricting)

Election Results by Precinct



Choice	Total Votes	Percent
Yes	214,613	41.27%
No	305,439	58.73%

Absentee Voting

In Missouri, voters who are unable to get to their polling place on Election Day may vote absentee if they have a valid reason under the law. Absentee voting has been an option regularly exercised by voters in St. Louis County throughout its elections. Until 2020, this option was most often used by elderly and disabled voters. However, during the COVID-19 pandemic, absentee voting was expanded and significantly increased in popularity among County voters.

The focus on absentee voting began in earnest after COVID-19 cases were confirmed in St. Louis County in March. With voter safety in mind, the St. Louis County Board of Elections (BOE) preemptively mailed a letter that included absentee ballot applications to every registered voter age 60 years or older. Since this demographic group was expected to be most at-risk for COVID-19, distributing applications made it easier for them to cast an absentee ballot by eliminating the step of having to seek out an absentee application. This process worked well for the June General Municipal Election, with 73,888 absentee ballot applications returned to the BOE.

The Missouri legislature also grappled with the impact of the pandemic on the 2020 election cycle. A few days after the June election, the Governor signed a new law into effect for 2020 elections adding a seventh reason for voting absentee and allowing a mail-in ballot option. The new reason added to the law expanded eligibility to voters who had contracted or were at risk of contracting COVID-19 based on age and specific health criteria; notarization was not required for this reason. The mail-in ballot option was available to any registered voter in Missouri, and did not require an excuse, but did require the envelope to be notarized and returned by U.S. mail.



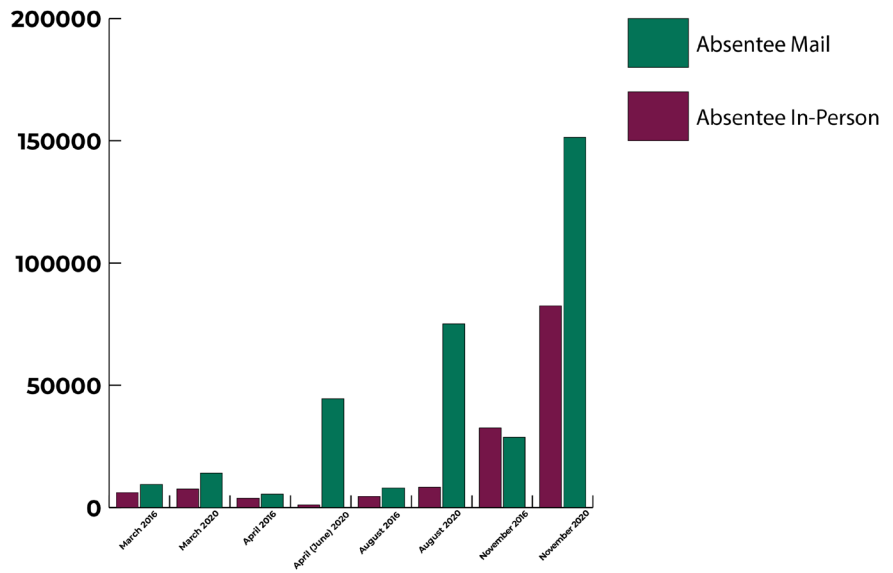
A member of a bipartisan team compares a list of voters who returned absentee ballots to the actual set of ballots to ensure accuracy.

The expansion of voting options resulted in a significant increase in absentee and mail-in voting: the BOE received 96,660 applications for the August Primary Election with 12.7% of voters requesting an absentee ballot with the at-risk option and 3.5% requesting a no excuse mail-in ballot. Compared to the August Primary Election in 2016, there was a 688% increase in applications.

To underscore the magnitude of these changes in 2020, just under 3 weeks prior to the August election, the BOE staff had processed 75,164 applications, which exceeded the total from the 115 other counties in Missouri by 15,000. Between July 31st and August 4th, 30 bipartisan teams opened the 75,065 absentee ballots that were returned to the BOE via mail or in-person from one of the four satellite sites or the BOE office.

Absentee Voting

Although the increase in absentee voting during August was impressive, the most significant results came during the November Presidential General Election. The BOE anticipated that the application request rate would be higher than in November 2016, but it wasn't anticipated that it would be 237% higher. 226,885 applications were received in 2020 while only 67,132 were received in 2016. Of these applications, approximately one-third of voters chose the at-risk option and under 9% requested a mail-in ballot. The chart above shows the comparison between absentee ballots returned via mail and in-person for elections in 2016 and 2020.



This chart displays the difference between 2016 and 2020 for absentee voting totals.

Between October 29th and November 3rd, 28 bipartisan teams opened the 150,417 absentee ballots that were returned to the BOE via mail or in-person at one of the satellite sites or the BOE office.

The high participation in November was by and large due to the presidential election. However, the BOE placed a heavy focus on absentee voter education leading up to the election that certainly played a role in voter participation. The instruction insert that accompanies the absentee ballot was completely redesigned to be clearer and more concise, a full communications plan was executed, and a digital advertising campaign was conducted.

Two absentee voting ads (pictured to the right) were included in the advertising campaign - one prior to the absentee ballot application deadline and one prior to the close of absentee voting. Both ads were targeted to County residents between the ages of 56 and 80. The first ad was viewed by 168,374 voters, which represents 60.7% of the residents that fall within the given age range. 169 of them clicked the ad to view more information. The second ad was viewed by 176,935 voters, which represents 63.8% of the residents that fall within the given age range. 208 of them clicked the ad to view more information. Both ads received a click through rate of .10% or higher, which is .2-.4% higher than the average election-specific ad.

Absentee voting, as the BOE knew it, completely changed in 2020. As the elections in 2021 carry out, the use of absentee ballots will be interesting to observe. Will voters continue the upward trend of voting absentee from the comfort of their homes or will the trend move back to most people voting in-person at a polling place on Election Day?



Outstanding Achievement Award

In 2020, the St. Louis County Board of Elections (BOE) proudly received an award for Exemplary Accomplishment by a Local Government Jurisdiction, Agency, or Individual from the East-West Gateway Council of Governments. The East-West Gateway Council of Governments serves the bi-state region, including Madison, Monroe, and St. Clair counties in Illinois and Franklin, Jefferson, St. Charles, and St. Louis counties, and the City of St. Louis, in Missouri. Each year, the agency recognizes the extraordinary work of municipal, county, special purpose, and school district officials in the St. Louis region. The Outstanding Local Government Award program honors individuals who provide the highest level of leadership; projects and partnerships that raise the bar; and jurisdictions that provide a level of excellence, expertise, and service in local government for all to emulate.

In receiving this award, the BOE was recognized for its “success in creating a truly impressive program that emphasizes impeccable and efficient public voting process and serves as a model for others in the region.” It is believed that this was the first time an election agency received such an award in the program’s 50+ year history.

The award acknowledged the BOE’s preparation and capacity to handle the challenges of conducting four countywide elections in a presidential election year during the pandemic. While the BOE always strives to conduct fair, accurate, and safe elections, the Board was credited for its budgeting foresight, responsiveness, innovation, and use of technology.

Major accomplishments during 2020 documented in the award nomination included:

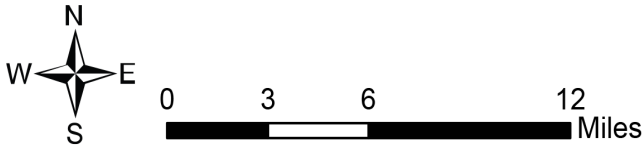
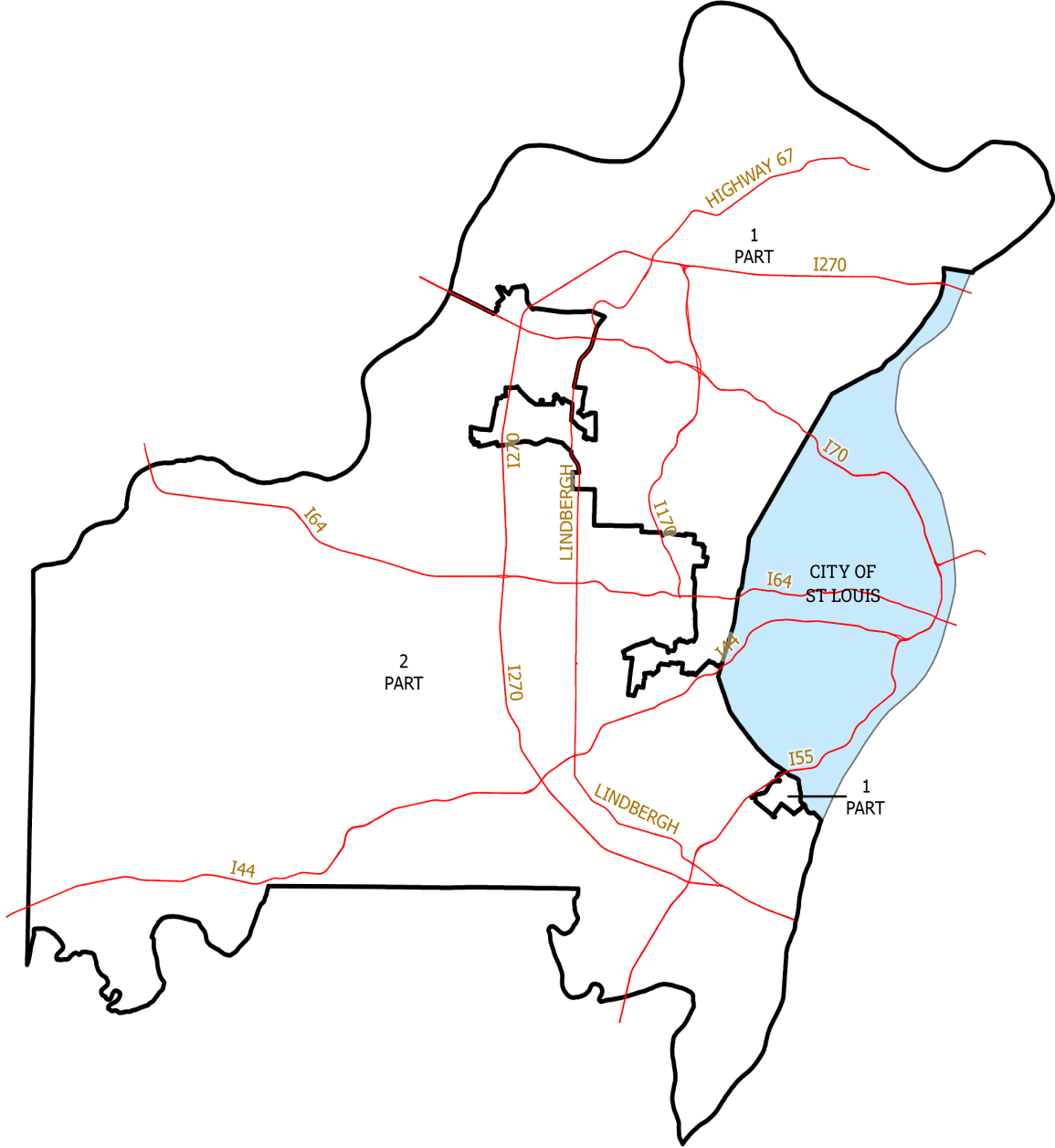
- State-of-the-art voting equipment
- Vote anywhere election technology
- Absentee ballot processing and automation
- Virtual poll worker training
- Election apps and innovations (polling place and sample ballot lookup apps, myballottracking.com, election night ballot returns dashboard, etc.)
- Logistics and asset management
- Safe elections

East-West Gateway presented the award on November 19, 2020 at their annual meeting, held virtually due to the pandemic. St. Louis County Board of Election Directors Rick Stream and Eric Fey, who accepted the award, were featured in a video presentation, where each Outstanding Local Achievement Award winner was highlighted.



Pictured above is the Outstanding Local Government Achievement Award the BOE received.

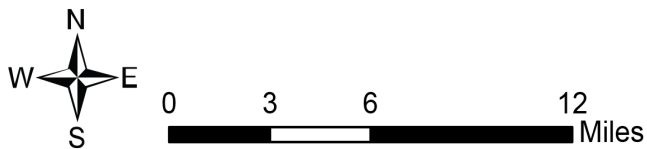
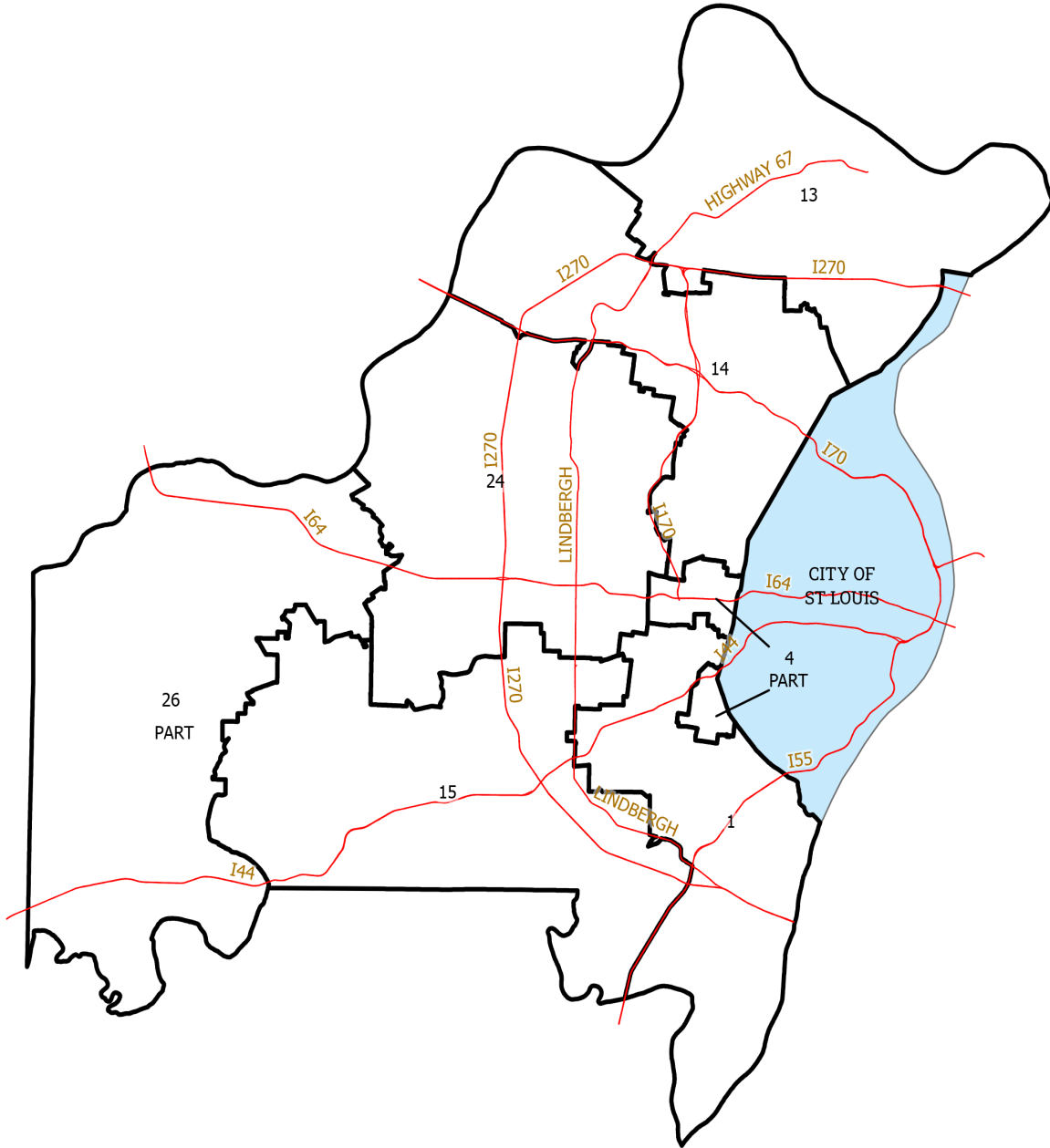
U.S. Congressional Districts



End of Year Voter Registrations

District 1: 280,235 - Cori Bush (D) **District 2:** 444,964 - Ann Wagner (R)

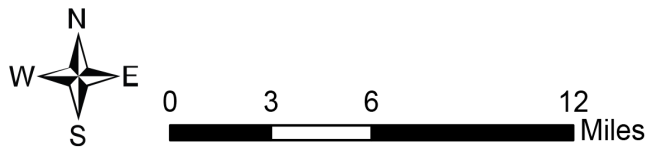
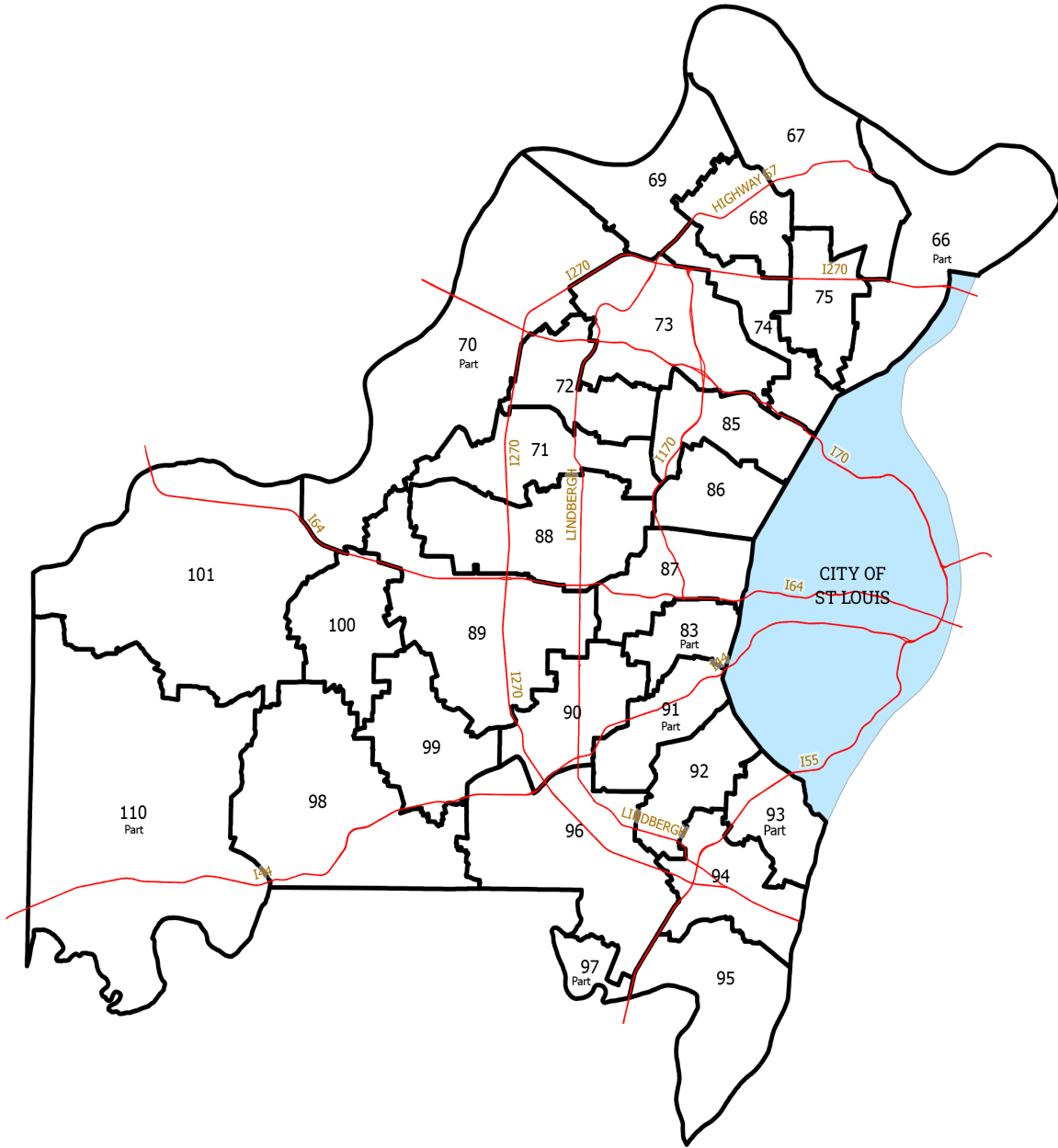
State Senate Districts



End of Year Voter Registrations

District 1: 133,043	Doug Beck (D)	District 15: 143,218	Andrew Koenig (R)
District 4: 26,217	Karla May (D)	District 24: 133,514	Jill Schupp (D)
District 13: 115,291	Angela Walton Mosley (D)	District 26: 65,056	Dave Schatz (R)
District 14: 108,850	Brian Williams (D)		

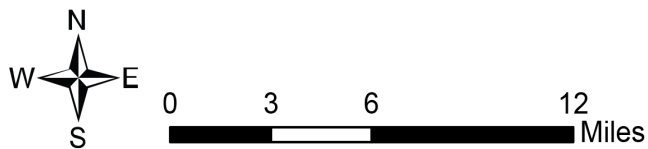
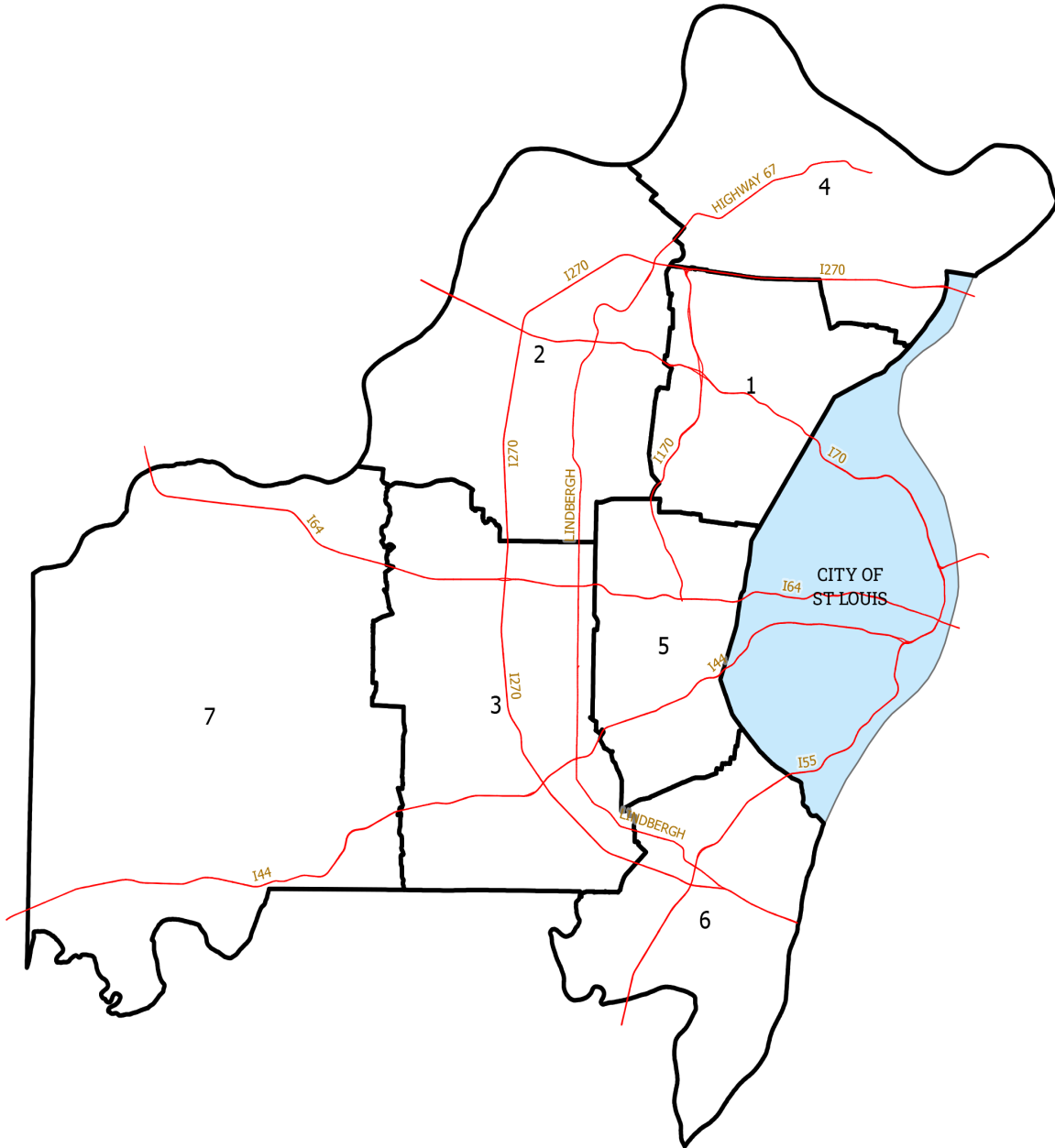
State Representative Districts



End of Year Voter Registrations

District 66: 19,449 - Marlene Terry (D)	District 74: 21,922 - Michael Person (D)	District 90: 30,693 - Barbara Phiifer (D)	District 98: 29,108 - Shamed Dogan (R)
District 67: 27,961 - Neil Smith (D)	District 75: 22,711 - Alan Gray (D)	District 91: 28,251 - Sarah Unsicker (D)	District 99: 27,524 - Trish Gunby (D)
District 68: 25,421 - Jay Mosley (D)	District 83: 20,009 - Jo Doll (D)	District 92: 27,369 - Michael Burton (D)	District 100: 29,881 - Derek Grier (R)
District 69: 25,206 - Gretchen Bangert (D)	District 85: 23,517 - Kevin Windham (D)	District 93: 19,189 - Bridget Walsh Moore (D)	District 101: 29,767 - Bruce DeGroot (R)
District 70: 19,895 - Paula Brown (D)	District 86: 26,771 - Joe Adams (D)	District 94: 25,837 - Jim Murphy (R)	District 110: 23,369 - Dottie Bailey (R)
District 71: 25,572 - LaDonna Appelbaum (D)	District 87: 28,599 - Ian Mackey (D)	District 95: 27,698 - Michael O'Donnell (R)	
District 72: 23,808 - Doug Clemens (D)	District 88: 29,108 - Tracy McCreery (D)	District 96: 30,391 - David Gregory (R)	
District 73: 21,708 - Raychel Proudie (D)	District 89: 32,369 - Dean Plocher (R)	District 97: 2,176 - Mary Elizabeth Coleman (R)	

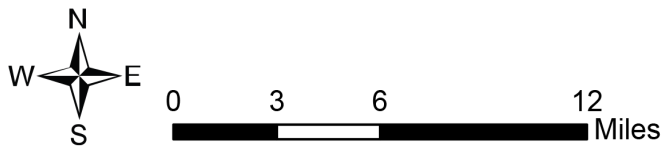
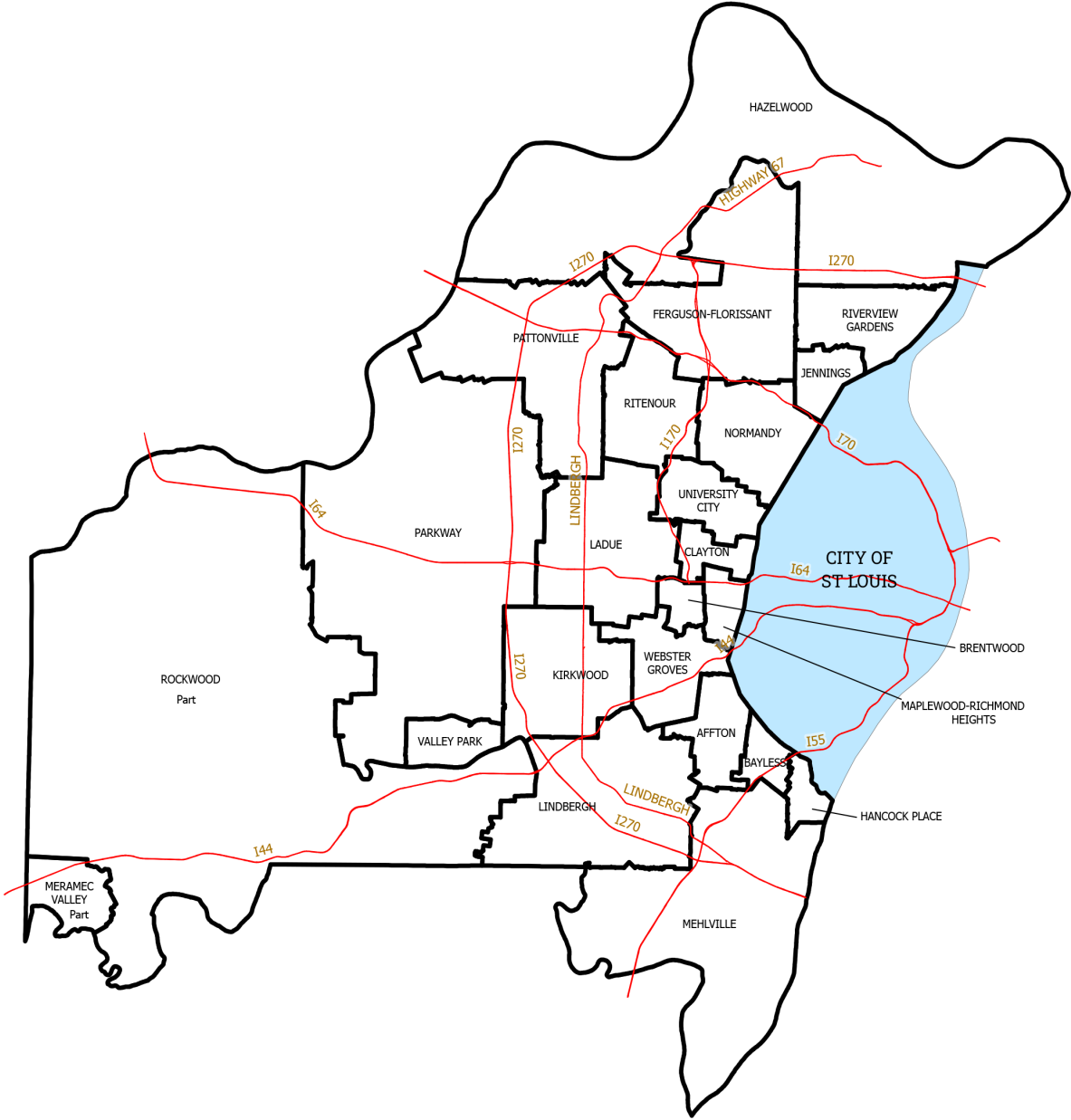
County Council Districts



End of Year Voter Registrations

District 1: 88,465	Rita Days (D)	District 5: 111,338	Lisa Clancy (D)
District 2: 96,190	Kelli Dunaway (D)	District 6: 104,657	Ernie Trakas (R)
District 3: 115,674	Tim Fitch (R)	District 7: 112,772	Mark Harder (R)
District 4: 96,093	Shalonda D. Webb (D)		

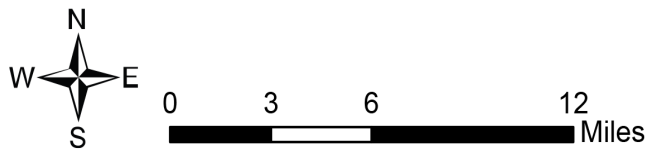
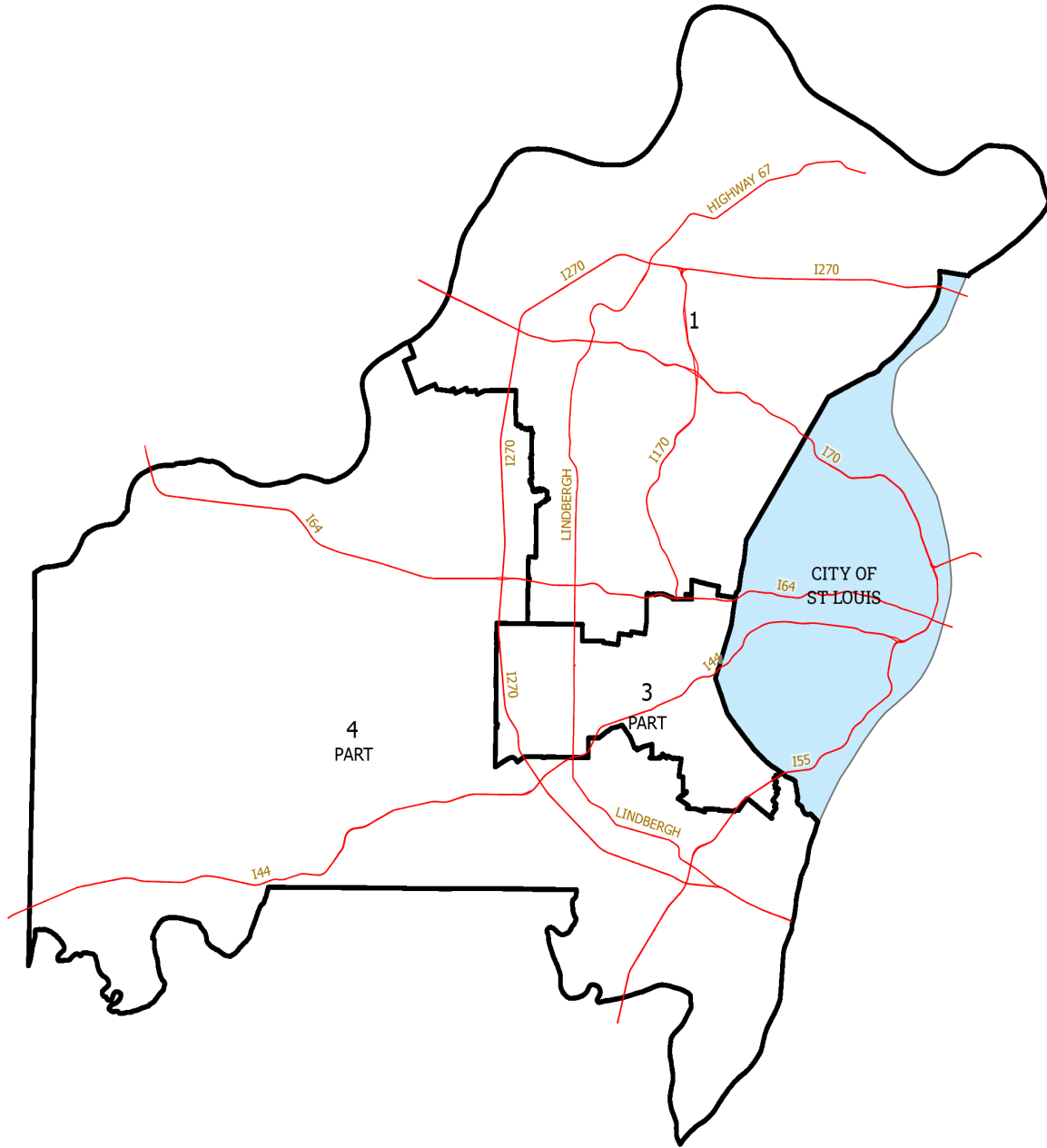
School Districts



End of Year Voter Registrations

Affton: 19,344	Jennings: 10,267	Normandy: 22,526	Valley Park: 5,973
Bayless: 8,343	Kirkwood: 34,108	Parkway: 108,561	Webster Groves: 26,228
Brentwood: 6,634	Ladue: 22,142	Pattonville: 30,209	
Clayton: 12,104	Lindbergh: 38,653	Ritenour: 26,143	
Ferguson-Florissant: 45,526	Maplewood-Richmond Heights: 10,566	Riverview: 22,381	
Hancock Place: 5,065	Mehlville: 70,329	Rockwood: 90,121	
Hazelwood: 81,663	Meramec Valley: 75	University City: 28,228	

Junior College Districts





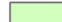

End of Year Voter Registrations

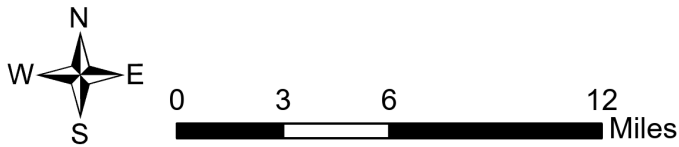
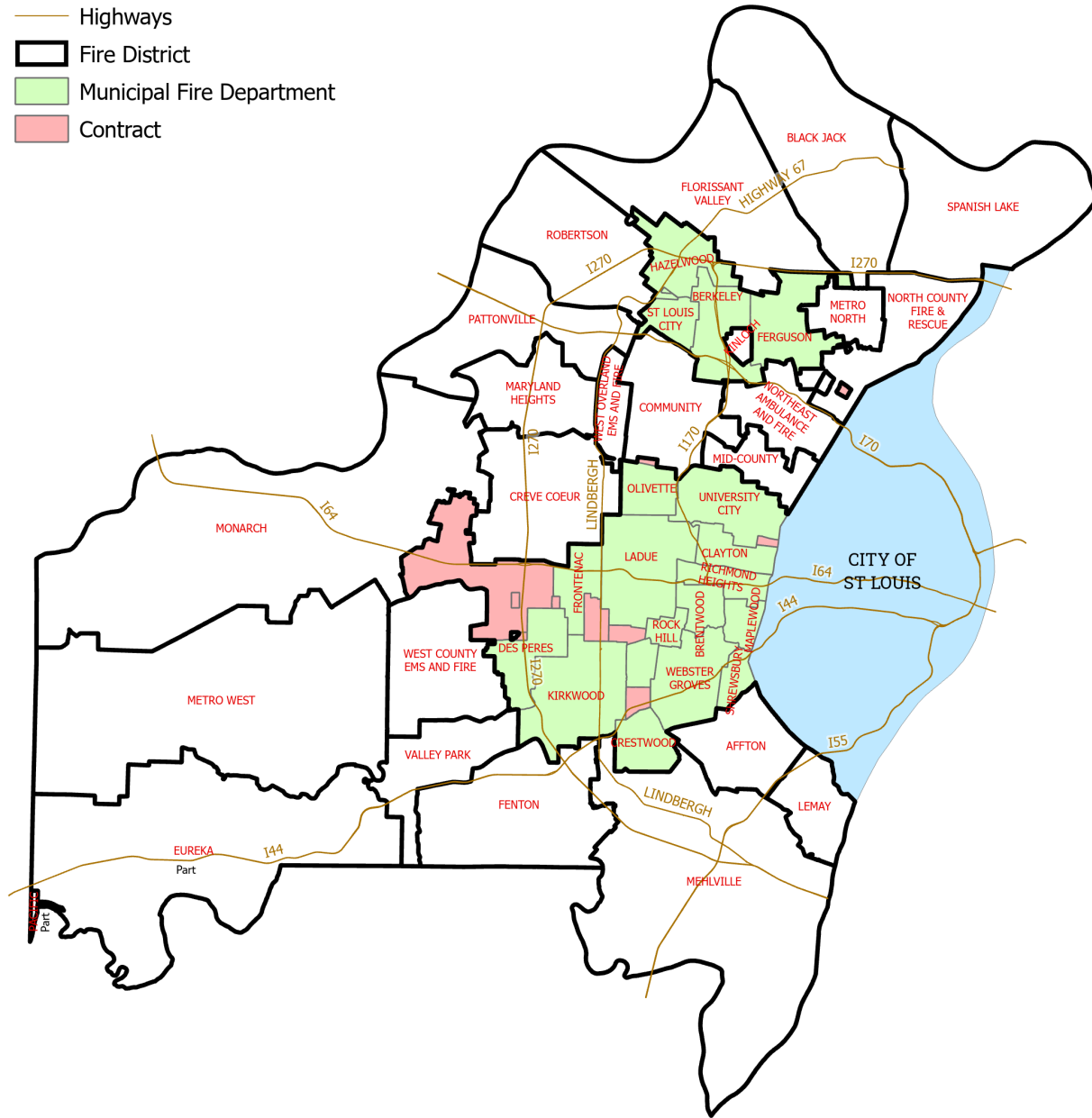
District 1: 301,189

District 4: 318,777

District 3: 105,223

Fire Districts

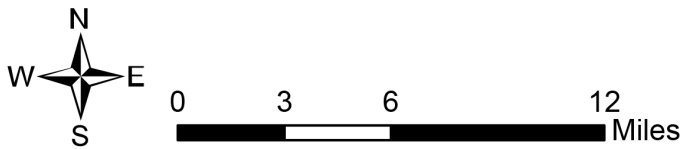
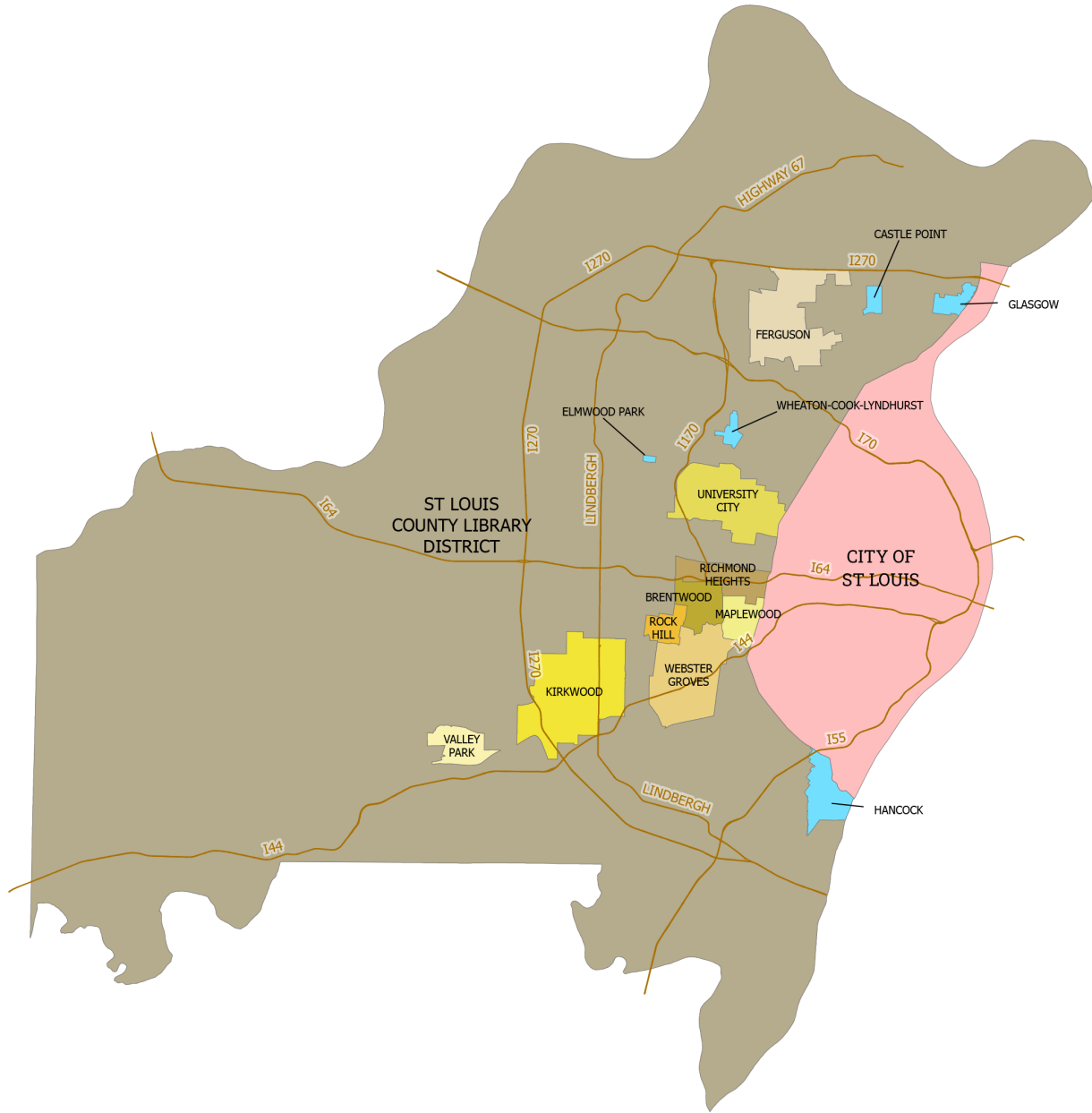
-  Highways
-  Fire District
-  Municipal Fire Department
-  Contract



End of Year Voter Registrations

Affton: 25,602	Florissant Valley: 49,293	Metro West: 60,108	Pattonville: 9,431
Black Jack: 34,257	Kinloch: 191	Mid County: 7,346	Robertson: 3,508
Community: 27,425	Lemay: 11,081	Monarch: 47,902	Spanish Lake: 11,453
Creve Coeur: 27,792	Maryland Heights: 14,426	North County Fire & Rescue: 20,315	Valley Park: 9,270
Eureka: 10,474	Mehlville: 38,653	Northeast Ambulance & Fire: 16,995	West County: 27,351
Fenton: 21,002	Metro North: 10,927	Pacific: 7	West Overland: 5,080

Library & Light Districts



Library

End of Year Voter Registrations

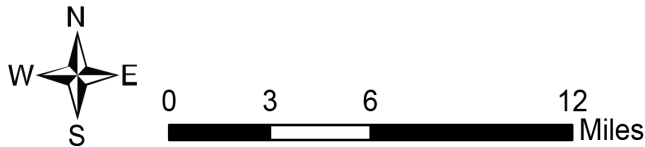
Brentwood: 6,247	Rock Hill: 3,815
Ferguson: 12,572	St. Louis County: 618,648
Kirkwood: 22,692	University City: 27,526
Maplewood: 5,848	Valley Park: 2,015
Richmond Heights: 7,253	Webster Groves: 18,573

Light

End of Year Voter Registrations

Castle Point: 1,321
Hancock: 5,125
Wheaton-Cook-Lyndhurst: 775
Glasgow: 2,319
Elmwood Park: 383

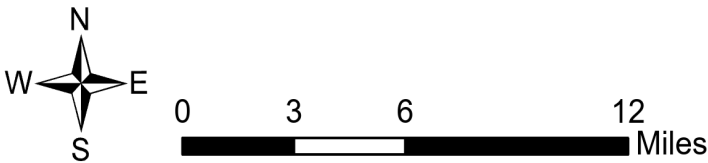
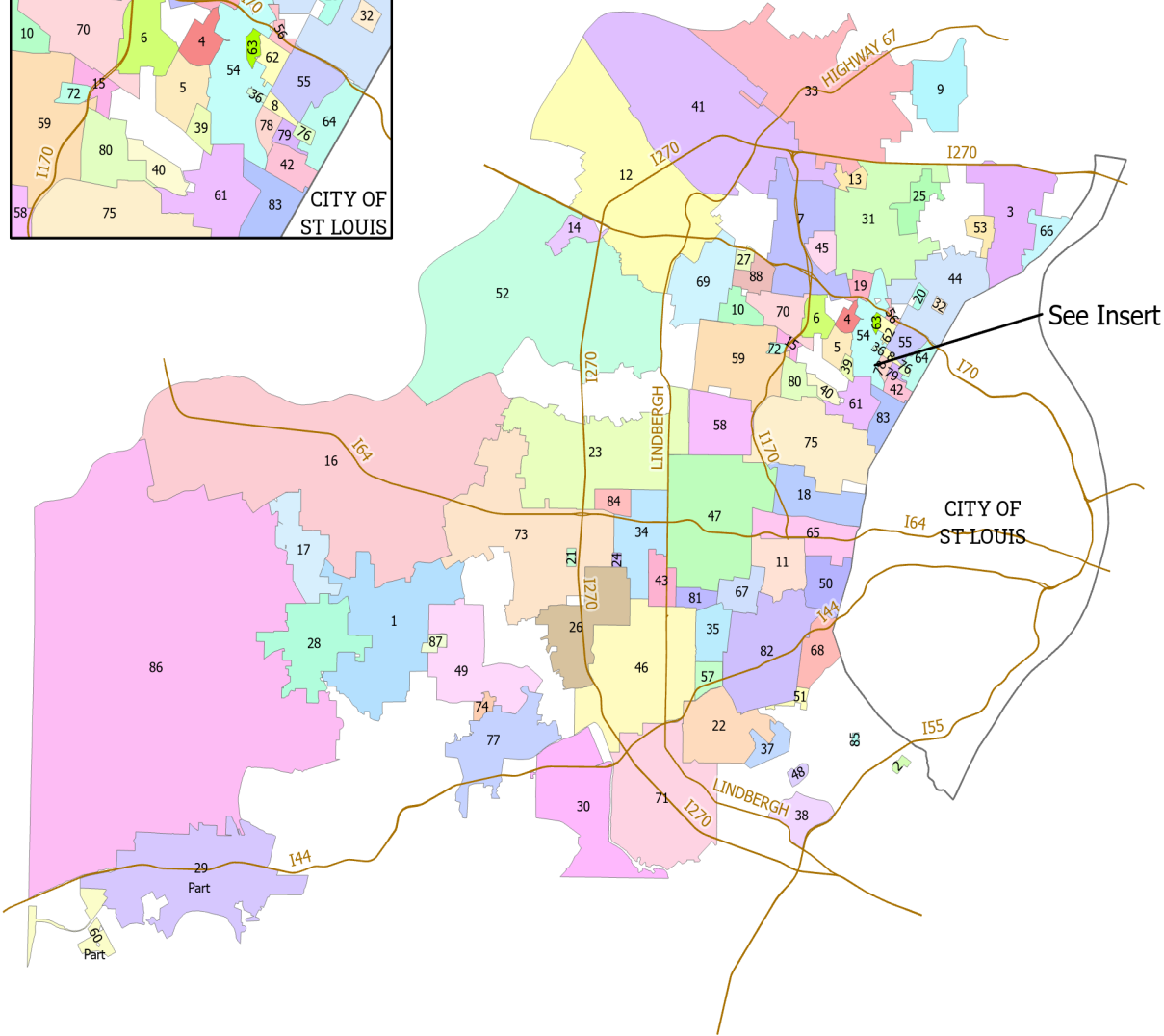
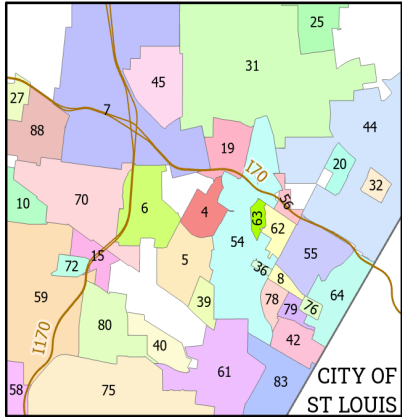
Townships



End of Year Voter Registrations

Airport: 21,626	Ferguson: 23,298	Lewis & Clark: 25,242	Normandy: 21,235	Tesson Ferry: 27,402
Bonhomme: 29,445	Florissant: 24,395	Lemay: 23,354	Northeast: 24,224	University: 25,588
Chesterfield: 29,294	Gravois: 27,294	Maryland Heights: 26,134	Norwood: 20,304	Wild Horse: 27,741
Creve Coeur: 28,697	Hadley: 25,402	Meramec: 27,605	Oakville: 27,463	
Clayton: 29,808	Jefferson: 28,224	Midland: 23,024	Queeny: 25,966	
Concord: 27,525	Lafayette: 28,237	Missouri River: 30,567	St. Ferdinand: 20,524	

Municipalities



End of Year Voter Registrations

1 City of Ballwin: 23,618	49 City of Manchester: 13,680
2 City of Bella Villa: 502	50 City of Maplewood: 5,848
3 City of Bellefontaine Neighbors: 7,187	51 Village of Marlborough: 1,296
4 City of Bellerive Acres: 173	52 City of Maryland Heights: 17,848
5 City of Bel-Nor: 1,160	53 City of Moline Acres: 1,523
3 City of Bel-Ridge: 1,418	54 City of Normandy: 2,472
7 City of Berkeley: 5,410	55 City of Northwoods: 2,956
8 City of Beverly Hills: 344	56 Town of Norwood Court: 450
9 City of Black Jack: 4,885	57 City of Oakland: 1,079
10 City of Breckenridge Hills: 2,272	58 City of Olivette: 6,003
11 City of Brentwood: 6,247	59 City of Overland: 10,087
12 City of Bridgeton: 8,039	60 City of Pacific: 8
13 City of Calverton Park: 837	61 City of Pagedale: 1,998
14 Village of Champ: 10	62 City of Pasadena Hills: 781
15 City of Charlack: 840	63 Village of Pasadena Park: 343
16 City of Chesterfield: 37,960	64 City of Pine Lawn: 1,951
17 City of Clarkson Valley: 2,259	65 City of Richmond Heights: 7,253
18 City of Clayton: 10,672	66 Village of Riverview: 1,385
19 City of Cool Valley: 827	67 City of Rock Hill: 3,815
20 City of County Club Hills: 734	68 City of Shrewsbury: 4,798
21 Village of County Life Acres: 83	69 City of St. Ann: 8,441
22 City of Crestwood: 9,847	70 City of St. John: 3,999
23 City of Creve Coeur: 14,475	71 City of Sunset Hills: 7,201
24 City of Crystal Lake Park: 419	72 Village of Sycamore Hills: 455
25 City of Dellwood: 3,306	73 City of Town and Country: 8,994
26 City of Des Peres: 7,391	74 City of Twin Oaks: 429
27 City of Edmundson: 448	75 City of University City: 27,526
28 City of Ellisville: 7,654	76 Village of Uplands Park: 267
29 City of Eureka: 8,293	77 City of Valley Park: 4,648
30 City of Fenton: 3,268	78 City of Velda City: 924
31 City of Ferguson: 12,572	79 City of Velda Village Hills: 808
32 City of Flordell Hills: 482	80 City of Vinita Park: 1,399
33 City of Florissant: 35,179	81 City of Warson Woods: 1,687
34 City of Frontenac: 3,174	82 City of Webster Groves: 18,573
35 City of Glendale: 4,916	83 City of Wellston: 1,165
36 Village of Glen Echo Park: 116	84 Village of Westwood: 268
37 Town of Grantwood Village: 770	85 Village of Wilbur Park: 339
38 City of Green Park: 1,985	86 City of Wildwood: 28,522
39 City of Greendale: 500	87 City of Winchester: 1,008
40 Village of Hanley Hills: 1,419	88 City of Woodson Terrace: 2,408
41 City of Hazelwood: 16,786	
42 Village of Hillsdale: 792	
43 City of Huntleigh: 345	
44 City of Jennings: 8,957	
45 City of Kinloch: 191	
46 City of Kirkwood: 23,335	
47 City of Ladue: 7,601	
48 City of Lakeshire: 987	
	Incorporated: 495,339
	Unincorporated: 229,869

St. Louis County Political Central Committees

Democratic

Republican

Libertarian

Green

AIRPORT

Marianne Solari | 314-428-7283
Curt Pierce II | 314-681-9659

Bruce Buwalda | 314-291-4483
Becky Buwalda | 314-291-4483

-
-

-
-

BONHOMME

Mary Linhares | 314-221-6885
Dennis Roach | 314-835-1785

Janice De Weese | 636-343-5360
Matt Maher | 314-898-3625

-
-

-
-

CHESTERFIELD

Catherine Paulsmeyer | 636-778-9692
Brian Legate | 314-503-6259

Norman Baxter | 636-532-3949
Judy Hon | 314-265-4867

Scott Ottenberg | 314-504-4529

-

-

CLAYTON

Kim Gamel | 314-409-6355
Kevin Pumm | 314-919-5176

Maryann Rober | 314-993-1990
David Stokes | 314-276-6305

Michael G. Lewis | 314-395-8676

-

-

CONCORD

Marilyn Beck | 314-603-7410
Otto Schoenberg III | 314-581-3529

Chris Struckhoff | 314-849-2226
William Heisse | 636-399-9697

-
-

Randall Holmes | N/A

-

CREVE COEUR

Sue Meredith | 314-801-7756
David Grant | 803-325-5427

Jeannine Stuart | 314-991-3978
Neal Breitweiser | 314-805-6020

Arnold Trembley | 314-567-0636
LaDonna Higgins | 314-704-5901

-
-

-
-

FERGUSON

Rochelle Walton Gray | 314-477-0841
Reggie Jones | 314-482-3805

James Knowles | 314-521-1043
Lisa Kaliski | 314-521-8615

Nick Kasoff | 314-991-7740

-

-

FLORISSANT

Mary Elizabeth Dorsey | 314-831-2134
Sean Weller | 314-458-8673

Teresa Stone | 314-830-4884
John Keck | 314-600-8027

-
-

-
-

GRAVOIS

Kelly Kress | 314-226-4246
Steve Reed | 314-401-9192

Jennifer Bird | 314-471-4606
Russell Dahmer | 314-843-6845

Ismaine Ayouaz | 314-443-5620

-

Barbara Suberi | N/A

Barbara Suberi | N/A

HADLEY

Gina Mitten | 314-664-0919
Nelson Mitten | 314-664-0919

Carol Reiss | 314-727-2817
Steve Bailey | 314-703-7948

-
-

Barbara Chicherio | N/A

Don Fitz | N/A

JEFFERSON

Anne Marshall | 314-882-0271
David Franklin | 314-608-5853

Judy Zakibe | 314-265-3387
Dan O'Sullivan | 314-803-1350

-
-

-
-

LAFAYETTE

Helena Webb | 636-329-4804
John Judy Jr. | 314-609-3966

Mark Harder | 314-852-8933
Patti Carroll | 636-527-8557

Martin Schulte | 314-413-6110
Ashley Vinson | 808-292-3896

-
-

-
-

LEMAY

Diane Kasten | 314-799-4290
Mike Owens | 314-899-0778

Teresa Douglas | 314-283-1764
Nathen Brekel | 314-877-9310

-
-

-
-

LEWIS & CLARK

Carol Stroker | 314-895-1807
Michael McCollom | 314-599-9777

June Schmidt | 314-838-3239
Dave Blanke | 314-837-0484

-
-

-
-

St. Louis County Political Central Committees

Democratic

Republican

Libertarian

Green

MARYLAND HEIGHTS

Dale Steinberg 314-469-1649	Sandy Chase 314-439-0615	Emil Peter N/A	-
David Steinberg 314-469-1649	Tom Wilsdon 314-434-6872	-	-

MERAMEC

Kristen Weber 314-302-3134	Rene Artman 636-225-4325	Raymond Harbert 636-227-6297	-
Brian Wingbermuehle 636-587-2272	Tim Fitch 314-267-1994	-	-

MIDLAND

Suzanne Jackson 314-703-5281	Carol Downen 314-427-5411	Emily Howard N/A	Mark Fitz N/A
Gerard M. Burke 314-993-2059	Patrick Brennan 314-346-3715	-	-

MISSOURI RIVER

Asma Raza 314-662-0467	Mary Jane Jokerst 314-993-8652	-	-
Al Gerber 314-409-4727	-	-	-

NORMANDY

Karen Pierre 314-479-0934	Jennifer McKnight 314-276-8414	-	Tamala Turner N/A
John Bowman 314-322-4441	Mark Backmann 314-302-3937	-	-

NORTHWEST

Margo McNeil 314-570-7677	Deann Deimeke 314-738-0957	Eric Harris 314-838-1776	-
Matt Robinson 314-895-3910	Dan Hyatt 314-473-8713	Sally L. Harris 314-838-1776	-

NORWOOD

Yolonda Henderson 314-323-9077	Jennifer Krupp 314-662-0517	-	-
Terry Wilson 314-882-0667	-	-	-

OAKVILLE

Joan Barry 314-487-1558	Celeste Witzel 314-892-2812	-	-
Bob Ford 314-846-5479	Kurt Witzel 314-892-2812	-	-

QUEENY

Jessica Labozzetta 314-954-8592	Jenifer Clifton 314-603-3486	-	-
Francis "Butch" Miller 314-614-5390	Adam Bohn 314-604-9913	-	-

ST. FERDINAND

Chevon Weaver 314-323-0361	James Rowe 314-868-0136	Ted Brown 314-388-4478	-
Tommie Pierson, Sr. 314-707-5328	-	Julie Stone 636-242-1776	-

SPANISH LAKE

Gwen Reed 314-741-4738	Diane Wildman 314-397-9758	Jeff Coleman 314-438-9202	-
Tony Weaver 314-653-6300	Robert (Bobby) Koch 314-831-2483	-	-

TESSON FERRY

Laura Metz 816-517-0336	Christy Hessel 314-845-6879	-	-
Tom Madden 314-494-8985	John Judd 314-416-4605	-	-

UNIVERSITY

Hazel M. Erby 314-997-0692	Sarah Davoli 314-725-4169	-	Betsey Mitchell N/A
Farrakhan Shegog 314-328-9892	Ted Engler 314-997-5553	-	Zaki Baruti N/A

WILDHORSE

Candace Farmer 636-299-0537	Anne Gassel 636-448-2124	-	-
Dennis Lavallee 636-458-5900	-	-	-

Board of Elections Staff

(as of time of publication)

COMMISSIONERS

Robert L. Chambers (R)
Marsha E. Haefner (R)

Trudi McCollum Foushee (D)
Patricia Yaeger (D)

DIRECTORS

Rick Stream (R) 314-615-1955

Eric Fey (D) 314-615-1950

DEPUTY DIRECTORS

Christian Tolbert (R) 314-615-1853

Julie Leicht (D) 314-615-1831

ADMINISTRATIVE ASSISTANTS

Peggy Kochner (R) 314-615-1854

Hannah Talley (D) 314-615-1851

ASSISTANT DIRECTORS

Amy Blankenship (R) 314-615-1812
Theresa Dintleman (R) 314-615-1804

Daryl Brown (D) 314-615-1820

ABSENTEE

Toni Bowman (R) 314-615-1836
Kali Dean (R) 314-615-1818
Joan Rauscher (R) 314-615-1890

Cliff Freebersyser (D) 314-615-1817
Laura Goebel (D) 314-615-1807

ACCOUNTING/HR

Bobby Kennedy (R) 314-615-1813

Tracy Williams (D) 314-615-1889
Darrick Tatum (D) 314-615-1814

IT/COMMUNICATIONS

Beau Coker (R) 314-615-1805
Al Molitor (R) 314-615-1888
Tim Peterson (R) 314-615-1972
Nicholle Spencer (R) 314-615-1802

Lori Fiegel (D) 314-615-1826
Jonathan Patrick (D) 314-615-1809
Damon Robinson (D) 314-615-1816

JUDGES & TRAINING

Haley Colter (R) 314-615-1806
Matthew Harms (R) 314-615-1803
Katie Hutson (R) 314-615-1840
Kevin McCloskey (R) 314-615-1866
Dave Rapp (R) 314-615-1872
Leigh Anne Warrington (R) 314-615-1861

Kim Creswell (D) 314-615-1965
Maureen Callahan (D) 314-615-1842
Cindy Carbery (D) 314-615-1867
LaTasha Jackson (D) 314-615-1847
Ela Kostic (D) 314-615-1846
Jim McHugh (D) 314-615-1858
Teisha Whitney (D) 314-615-1871

REGISTRATIONS & PETITIONS

Vicci Turner (R) 314-615-1822
Terry Conyers (R) 314-615-1838
Melanie Craig (R) 314-615-1825
Adrienne Hodges (R) 314-615-1839
Leo Kelley (R) 314-615-1823
Linda McLain (R) 314-615-1859
Christopher Robertson (R) 314-615-1824

Amber Cole (D) 314-615-1845
Marie Ellison (D) 314-615-1975
Jennifer Kiser (D) 314-615-1856
Melissa Moore (D) 314-615-1900
Sherry Sides (D) 314-615-1837

MAPPING/POLLING PLACES

Rob Ryan (R) 314-615-1927

Bill Hartnett (D) 314-615-1828

LOGISTICS

Joe Winter (R) 314-615-1876
Ryan Hunt (R) 314-615-1973
Michael Smith (R) 314-615-1832

Craig Hite (D) 314-615-1875
Greg Allen (D) 314-615-1974
Rich Wattler (D) 314-615-1971

Recognition

FORMER COMMISSIONERS

The Board of Election Commissioners appreciates the four years (2017 - 2020) of service from the former commissioners for conducting all public elections within the County.

Sharon Buchanan-McClure - Chair (R)

Peggy Barnhart - Commissioner (R)

Matthew Potter - Commissioner (D)

FORMER STAFF

The Board of Elections appreciates the years of service and commitment from the staff members who retired in 2019 or 2020.

Karen Buttice - Senior Clerk (1997 - 2019)

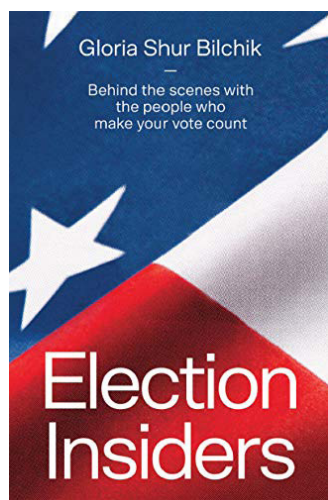
Rosemarie Moss - Administrative Asst. (1995 - 2020)

Mark Pursley - Senior Clerk (2015 - 2020)

Raymond Schindler - IT Manager (2013 - 2020)



The 2020 Biennial Report is dedicated to the memory of Richard (Dick) Bauer who had a hand in developing every Biennial Report from 1986-2018. Dick passed away in 2019.



Thank you to Gloria Shur Bilchik for writing *Election Insiders* about the St. Louis County Board of Elections. The book is a journey into the inter workings of voting, focusing on the staff at all levels behind the scenes. Upon reading it, you'll get a one-of-a-kind glimpse into a backstage world that voters usually don't see, but one that everyone depends on to keep elections fair and secure.

The book is available for purchase at Amazon or Barnes & Noble.

Saint Louis
COUNTY

ELECTION BOARD
